

Virtual Public Meeting *for* **EVERETT RIVERFRONT PLAN**

Thursday, May 13, 2021
7:00pm



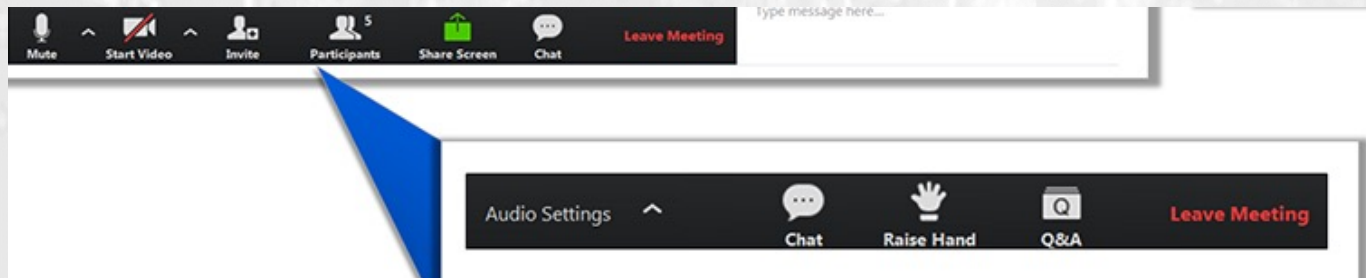
City of
Everett
Massachusetts

SHADLEY
ASSOCIATES

EVERETT RIVERFRONT PLAN

Questions during the presentation?

Use the “Q&A” button at the bottom of the screen and type your question.



The Hosts will answer questions at the end of the presentation.

There will also be breakout rooms for smaller group discussion.

MEETING AGENDA

- 7:00pm Welcome by MyRWA and Mayor Carlo DeMaria
- 7:15 Presentation
- 7:45 Full Meeting Clarification Questions
- 7:55 Breakout Rooms
- 8:15 Groups Report Back
- 8:25 Next Steps
- 8:30 Adjourn

EVERETT RIVERFRONT PLAN



"Our vision is a vibrant, healthy and resilient Mystic River watershed for the benefit of all our community members."

Transforming Parks & Paths



Water Quality



Habitat Restoration

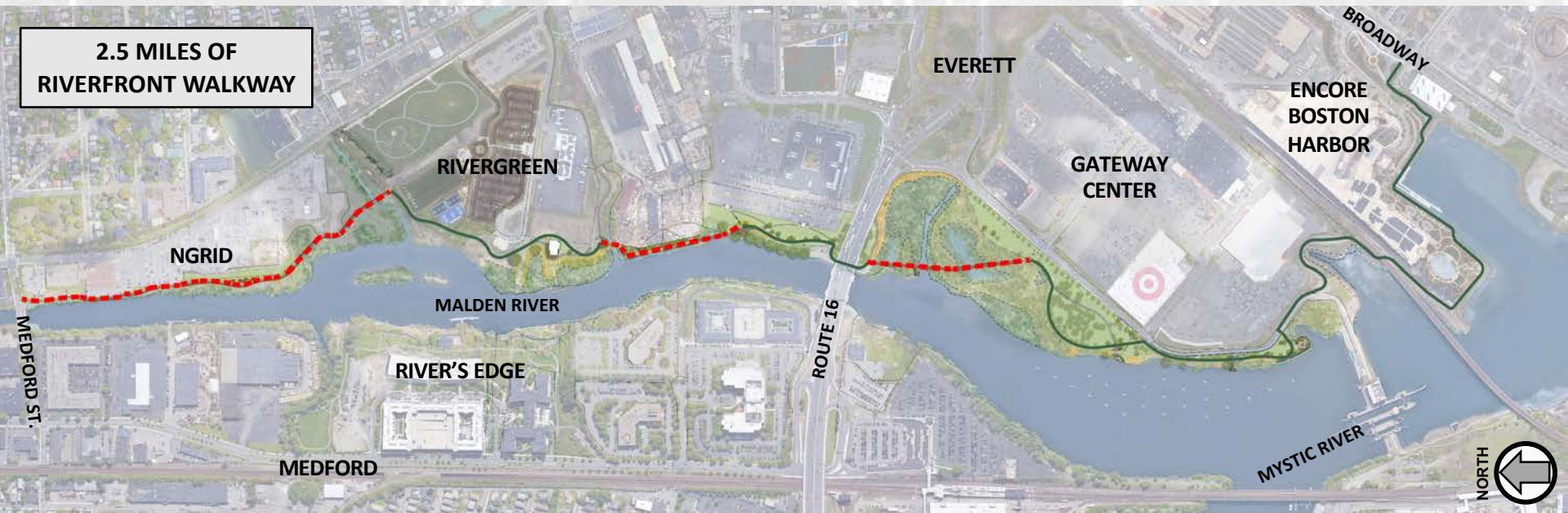


Climate Resilience

EVERETT RIVERFRONT PLAN

Welcome by Mayor Carlo DeMaria

- Everett's riverfront was invisible, inaccessible and polluted.
- Goals are improved access, recreation, transportation and economic development.
- Ongoing work on many sites includes public improvements and environmental cleanup.
- Thank you to John Preotle for River's Edge, and to Encore Boston Harbor, for starting the riverfront restoration!



PRESENTATION OVERVIEW

Consultant Team

City's Recent Riverfront Improvements & Planning Work

Riverfront Plan Overview & Details

Discussion & Breakout Rooms

Next Steps

EVERETT RIVERFRONT PLAN

CONSULTANT DESIGN TEAM

PRIME CONSULTANT &
LANDSCAPE ARCHITECT

Shadley Associates, P.C.

MARINE ENGINEER
GEI Consultants

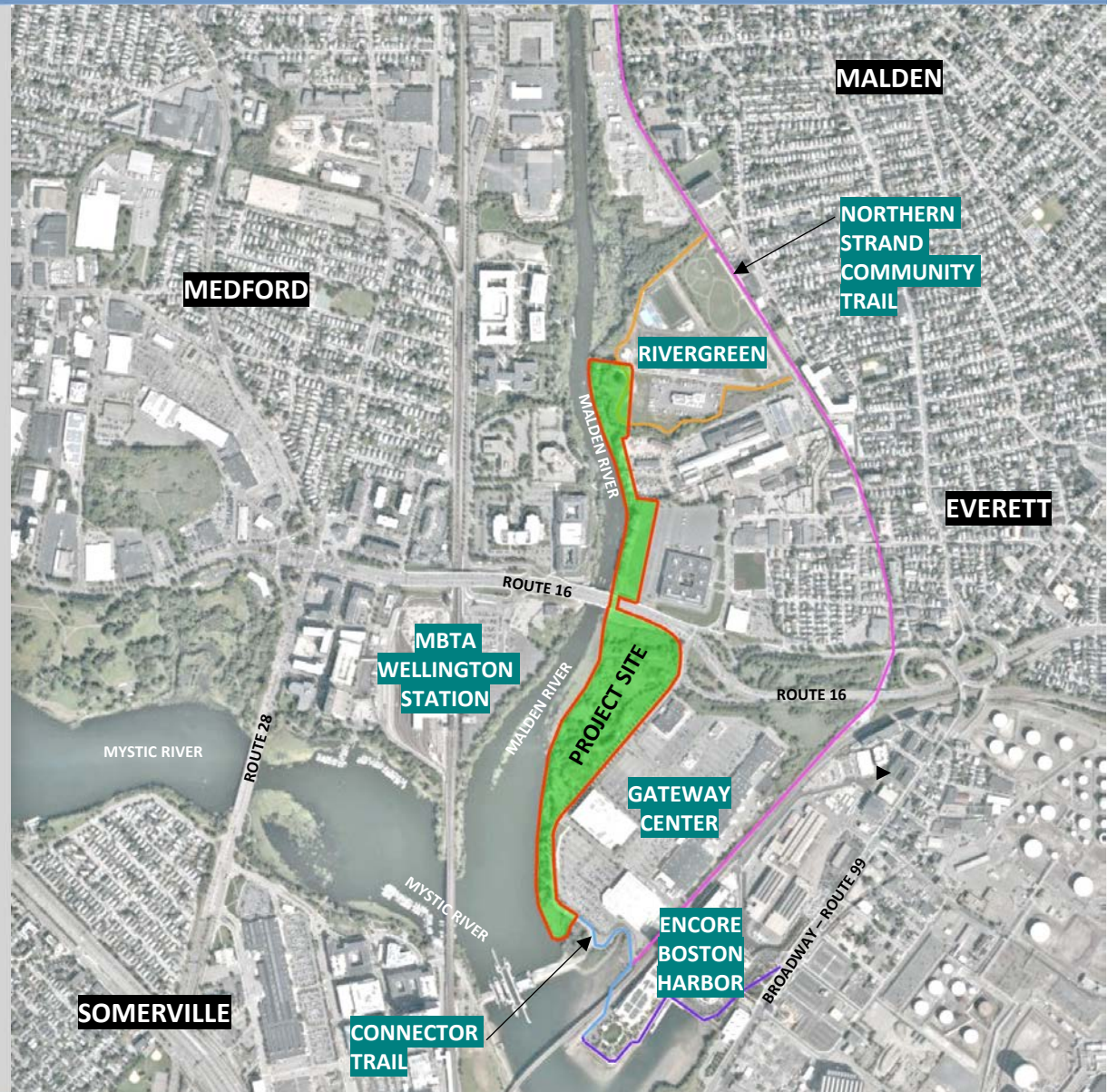
LICENSED SITE PROFESSIONAL
The Vertex Companies

CITY OF EVERETT PARTNERS



EVERETT RIVERFRONT PLAN

Context Map and Project Site



EVERETT RIVERFRONT PLAN

Project Site



EVERETT RIVERFRONT PLAN

Recent Riverfront Improvements & Planning Work

Summary of the City's Recent Riverfront Improvements & Planning Work

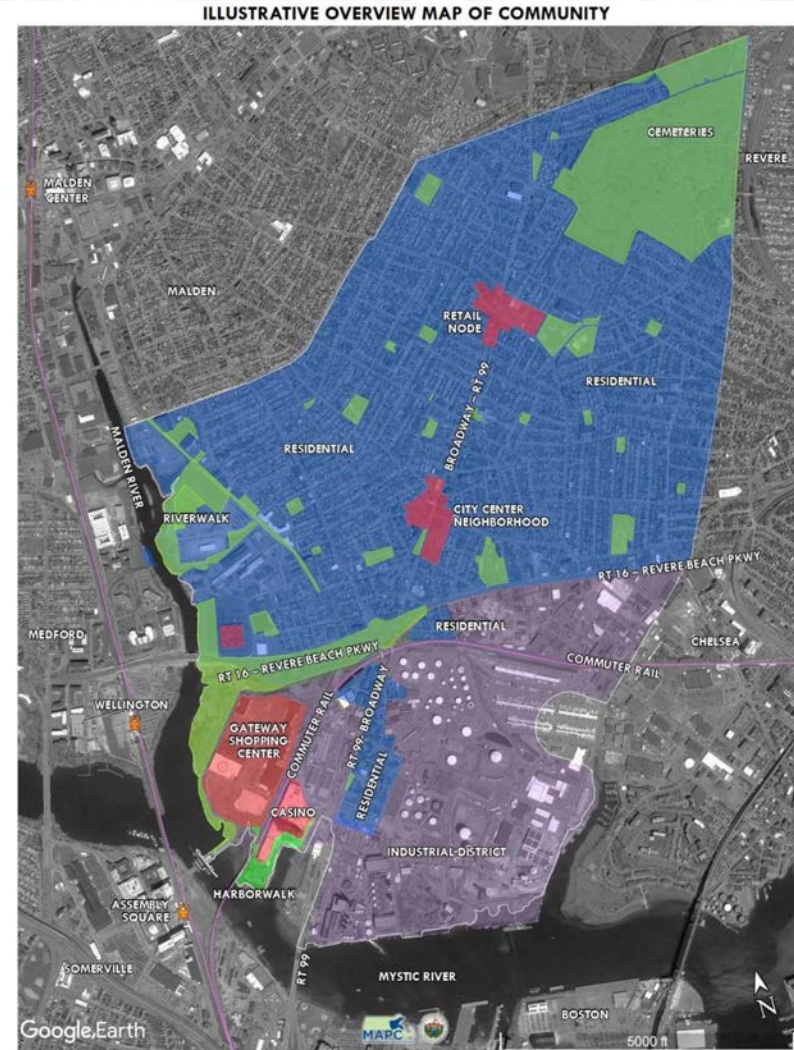
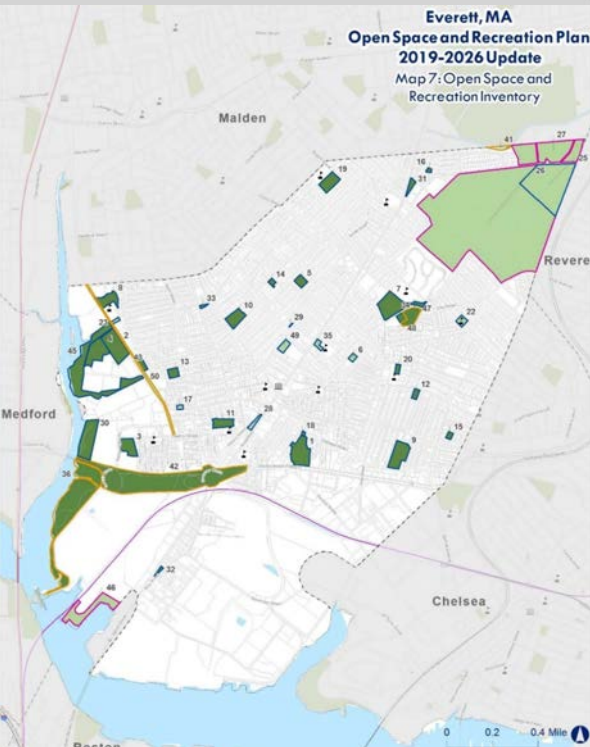
- City's Open Space and Recreation Plan
- Northern Strand Community Trail Extension
- Rivergreen Riverwalk and Park
- Rivergreen Temporary Boathouse and Boat Access
- Rivergreen Shoreline Restoration Projects
- Everett Riverfront District Master Plan
- Gateway Park Improvements & Invasive Vegetation Removal
- Encore Boston Harbor & Connector Trail

EVERETT RIVERFRONT PLAN

Recent Riverfront Improvements & Planning Work

Everett - DRAFT Open Space and Recreation Plan (2019):

“The Waterfront is critical open space in this Environmental Justice and Equity community”



CITY OF EVERETT – OPEN SPACE AND RECREATION PLAN – 2019-2026
community setting

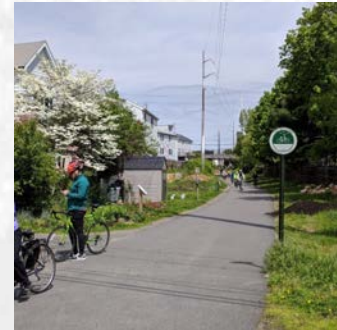
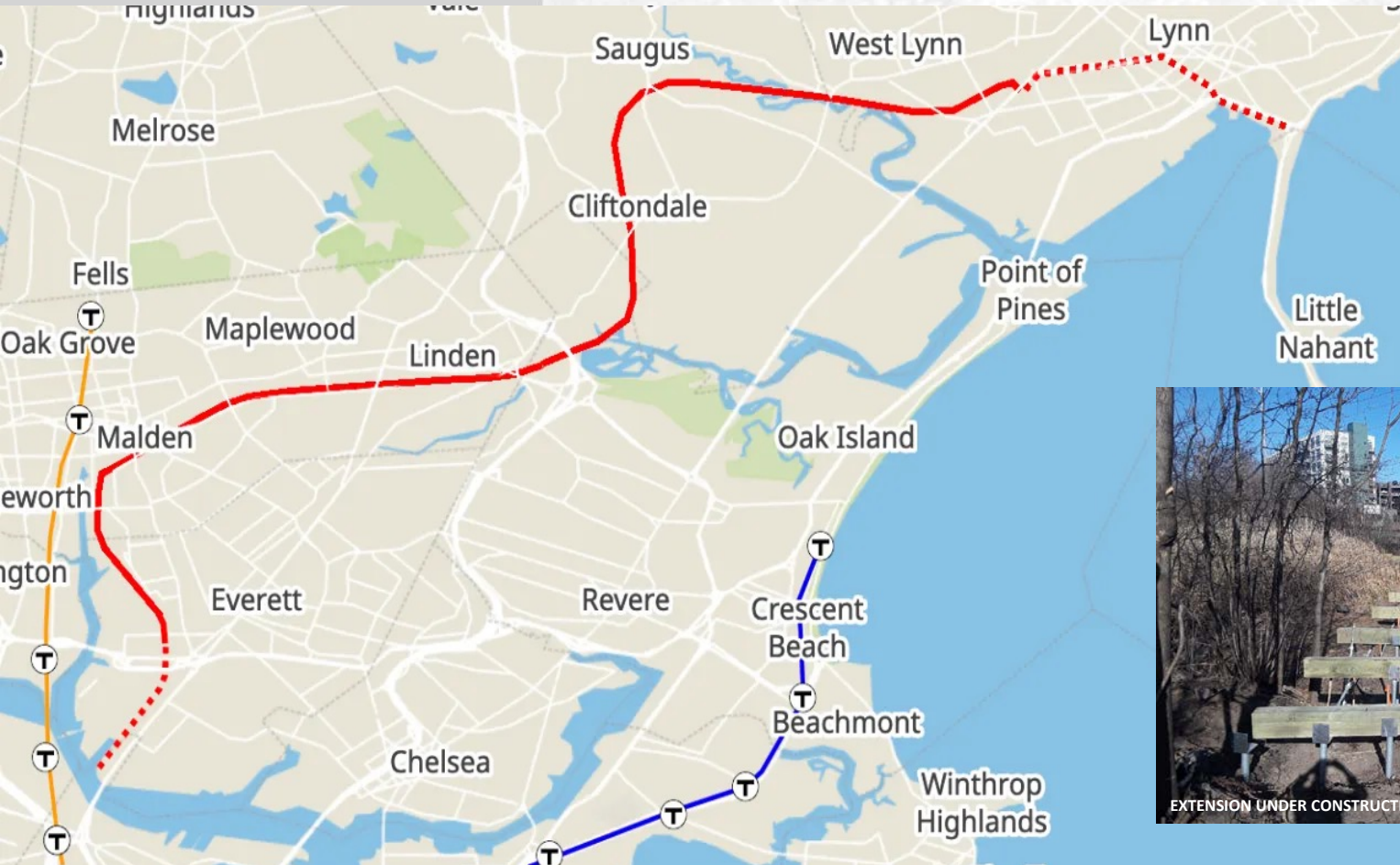
6 of 88

EVERETT RIVERFRONT PLAN

Recent Riverfront Improvements & Planning Work

Northern Strand Community Trail

Everett extension to be completed by end of 2022



EVERETT RIVERFRONT PLAN

Recent Riverfront Improvements & Planning Work



Rivergreen Riverwalk and Park

Riverwalk (.75-mile) completed in two phases from 2017-2019

Park completed in 2019 (turf field, playground, splash pad, basketball, hockey)



EVERETT RIVERFRONT PLAN

Recent Riverfront Improvements & Planning Work



Rivergreen Temporary Boathouse & Boat Access

Temporary Boathouse:

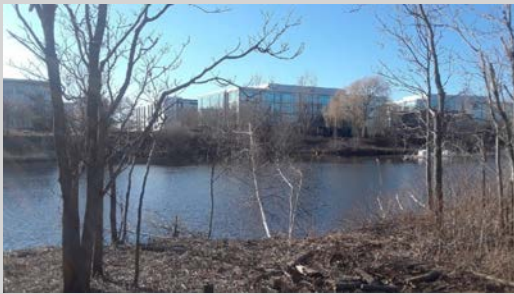
- Temporary tent structure
- Floating dock with gangway
- Currently in permitting
- Tentative opening in Fall 2021

Boat Access completed in 2020



EVERETT RIVERFRONT PLAN

Recent Riverfront Improvements & Planning Work



Invasive vegetation removal at the Malden River



North Creek Restoration – dredged channel and new native planting

Rivergreen Restoration Projects: South Creek, North Creek and Malden River Shoreline

To reduce flood risk, provide additional wildlife habitat, open river views, and enhance public access.



EVERETT RIVERFRONT PLAN

Recent Riverfront Improvements & Planning Work

Rivergreen Restoration Projects: Malden River Shoreline

Restoring Ecological Function and Enhancing Habitat at Rivergreen Park

What are Nature-based Solutions?

Nature-based actions protect, sustainably manage, and restore natural and modified ecosystems that address societal challenges effectively and adaptively, simultaneously providing human well-being and biodiversity benefits.

(International Union for Conservation of Nature)

Benefits



Supporting fish, wildlife & pollinator habitat



Water Quality Improvement



Creating recreational opportunities



Reducing Urban Heat Island Effect



Reducing Pollution

Opportunities to Incorporate Nature-based Solutions at Rivergreen Park



Hibernacula

Hibernacula, mounds of woody debris and stone, mimic the root of fallen trees. The exposed soil, rotting wood, and collected debris become habitat. Replicating this 'Old Growth' forest characteristic helps to jumpstart the natural process of the forest moving from recovery to prosperity.



Thicket

Brush piles form loose thickets creating a quiet protective home to many creatures including pollinators. Some nest in woody stems, while others want a safe and temperature regulated place to hang a cocoon or hide a pupa. Some birds, rodents, amphibians, and small predators also rely on these shelters while below ground fungi and soil building creatures rejuvenate the land.



Savannah

Savannahs are meadows with sparse trees. Their open structure lets in more solar energy prompting plants to produce more shareable food supply than they would in a dense and competitive forest making them a breeding and foraging ground for many birds, pollinators, and related species.

Innovative ideas for community driven Nature-based Solutions



Invasive-control

Invasive species thrive in the damaged landscapes that result from development. They lack predators and diseases to keep them in check but may also lack beneficial companions. Rather than pushing these back and hoping for the best, we build complex high value plant, soil, and animal communities that can effectively restore order to the recovering landscape.



Bee-nest

Bumblebees and other ground nesting bees provide more pollination than the agricultural bees we work so hard to restore every year. Our bumblebee nests provide ideal quarters for bumblebees and are built to be safe from large predators and uninviting to aggressive predatory ground wasps who want room for a massive swarm.



Recent Riverfront Improvements & Planning Work

Developed by another consultant team
in 2020

Master Plan goals include:

- Create a transportation network for better access and development potential
- Reconnect the public with the Malden River
- Encourage economic development
- Create a vibrant mixed-use neighborhood
- Phased implementation



The map shows the proposed development site in green, surrounded by existing buildings and parking lots. Labels include 'NEW 66 SHOPPING STREET DEVELOPMENT', 'NIGHT SHIFT BREWERY', 'TEDDIE PEANUT BUTTER', 'WILLINGTON PARKING LOT', and 'FARMINGTON LANE'.



EVERETT RIVERFRONT PLAN

Recent Riverfront Improvements & Planning Work

Mystic River Reservation at Gateway Park (20± acres)

- Removal of invasive plants along shoreline
- New signage
- Cleanup and repair



EVERETT RIVERFRONT PLAN

Recent Riverfront Improvements & Planning Work

Encore Boston Harbor & Connector Trail

Encore Boston Harbor (completed in 2019)

- Public waterfront walkway with connection to Lower Broadway

Connector Trail (completed in 2019)

- Connection between Gateway Park and Encore Boston Harbor
- Access to Northern Strand extension (to be completed in 2022)



EVERETT RIVERFRONT PLAN



The Riverfront Plan Overview

EVERETT RIVERFRONT PLAN

Top Answers

Walk

Boat (canoe, kayak, row)

Bicycle

Run

Also...

Fishing

Using a wheelchair

Watching Rowing

Parkour

Doing cleanups

Walking dogs

Painting

Spending time with family

What's your favorite thing to do on the riverfront?



EVERETT RIVERFRONT PLAN

The Riverfront Plan Overview



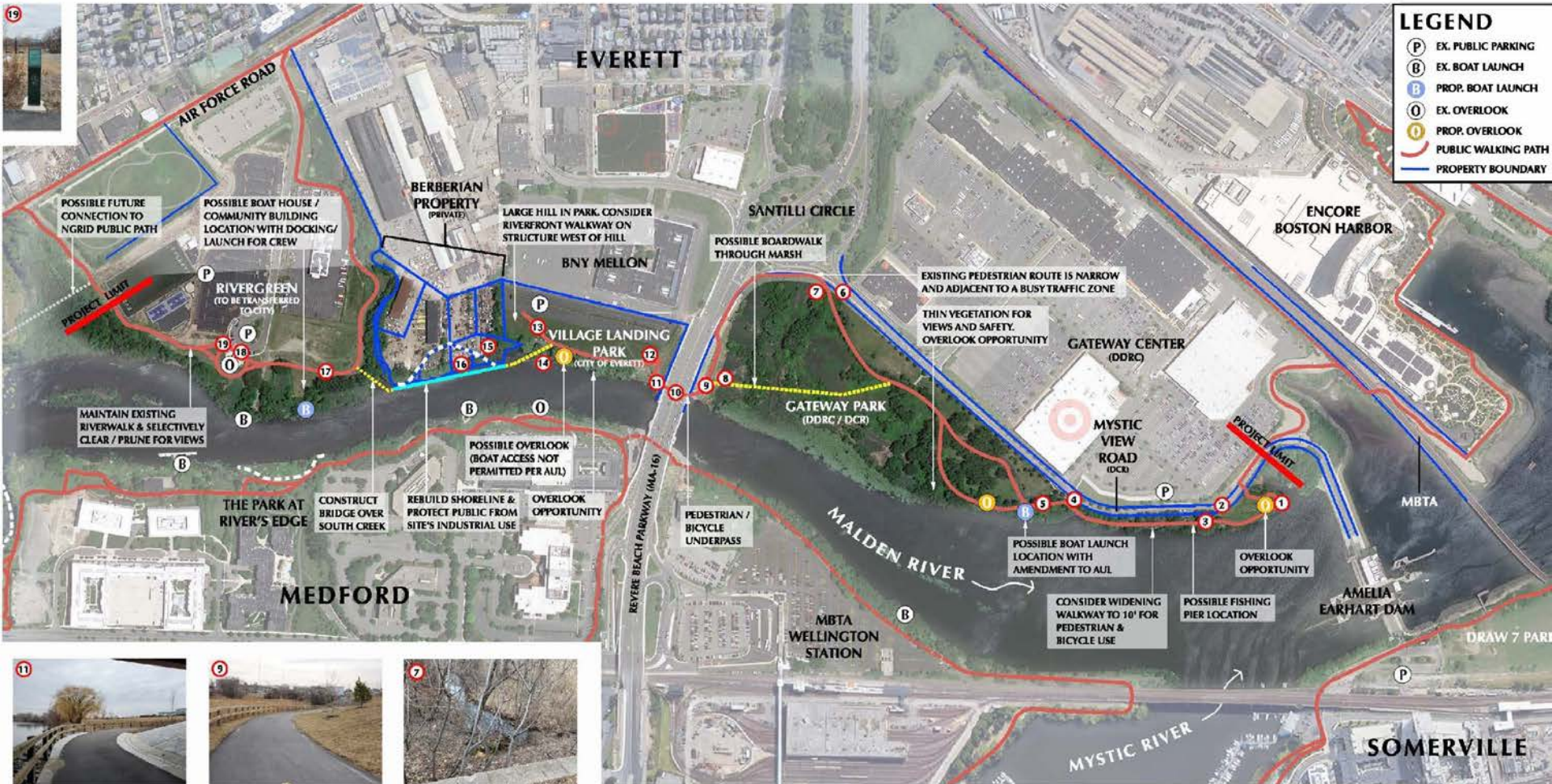
Overall Design Goals

- Connect destinations, parks, and bike paths
- 10-foot wide walkway for two-way travel for pedestrians and bicyclists
- Overlooks with seating and shade structures at important views
- Location for accessible canoe/kayak launch
- Abundant seating and bicycle parking along the riverfront
- Educational and interpretive elements and identity/wayfinding signage
- Lighting along main walkways for security and extended use
- Remove invasive vegetation to open views
- New native planting for erosion control, shade and wildlife habitat

EVERETT RIVERFRONT PLAN

The Riverfront Plan Overview

Site Opportunities & Constraints



EVERETT RIVERFRONT PLAN

The Riverfront Plan Overview

Overall Concept Plan



EVERETT RIVERFRONT PLAN

The Riverfront Plan Overview

Overall Concept Plan

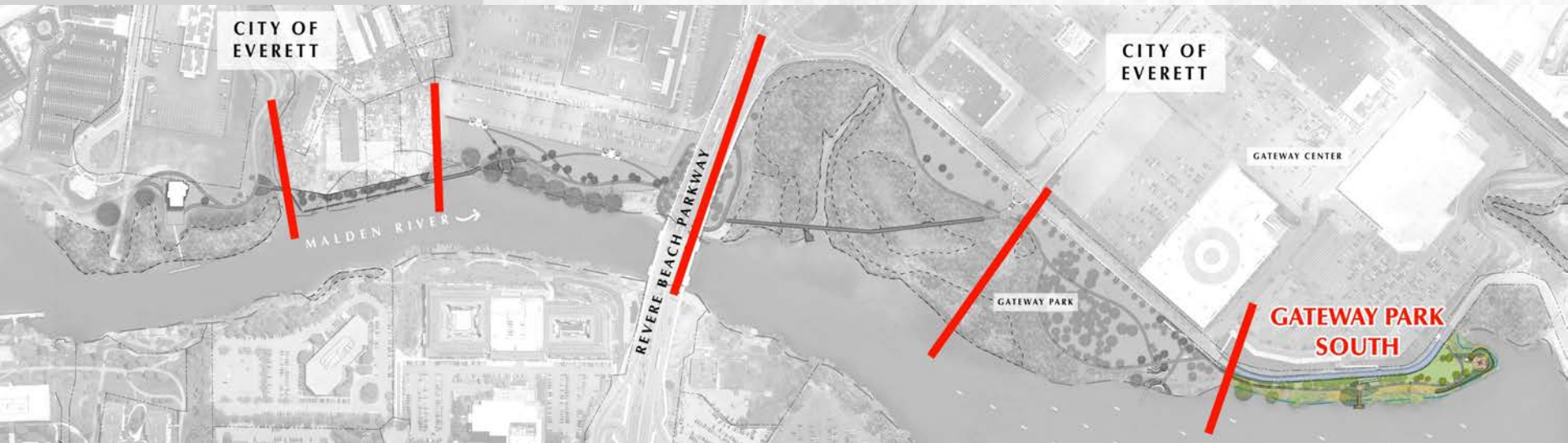
Project Site divided into six areas for further detail



EVERETT RIVERFRONT PLAN

Riverfront Plan Details

Gateway Park South



EVERETT RIVERFRONT PLAN

Riverfront Plan Details

Gateway Park South – Existing Conditions



EVERETT RIVERFRONT PLAN

Riverfront Plan Details

Gateway Park South – Enlarged Plan



Plan 1

EVERETT RIVERFRONT PLAN

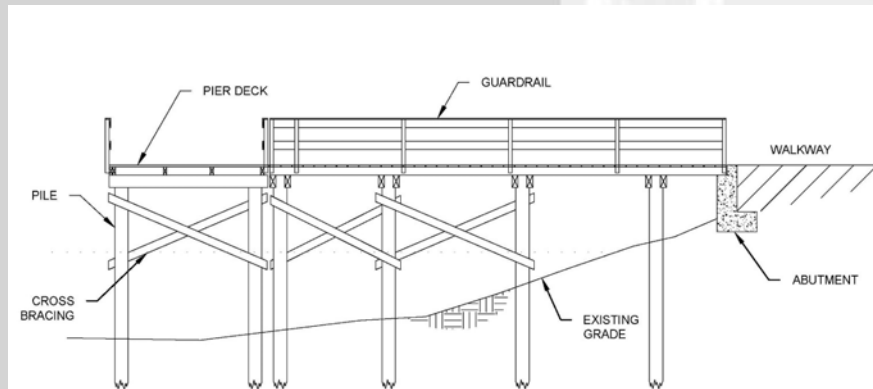
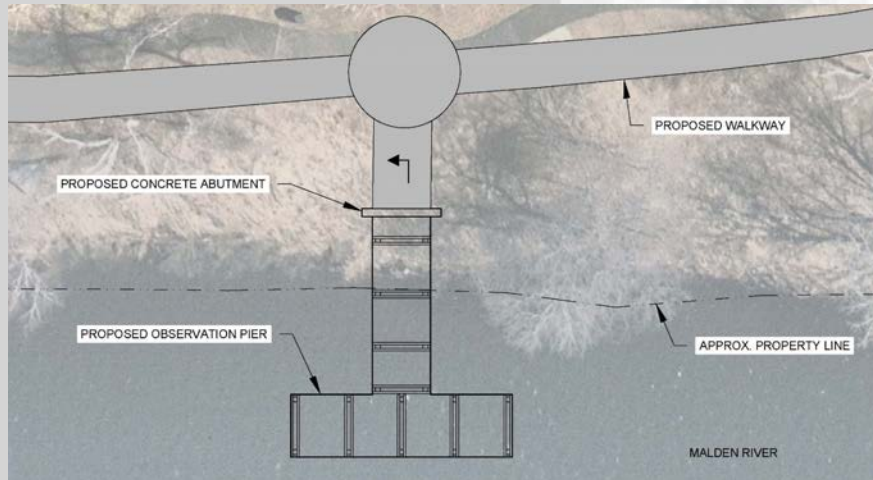


© Shadley Associates, PC

EVERETT RIVERFRONT PLAN

Riverfront Plan Details

Gateway Park South – Overlook Pier

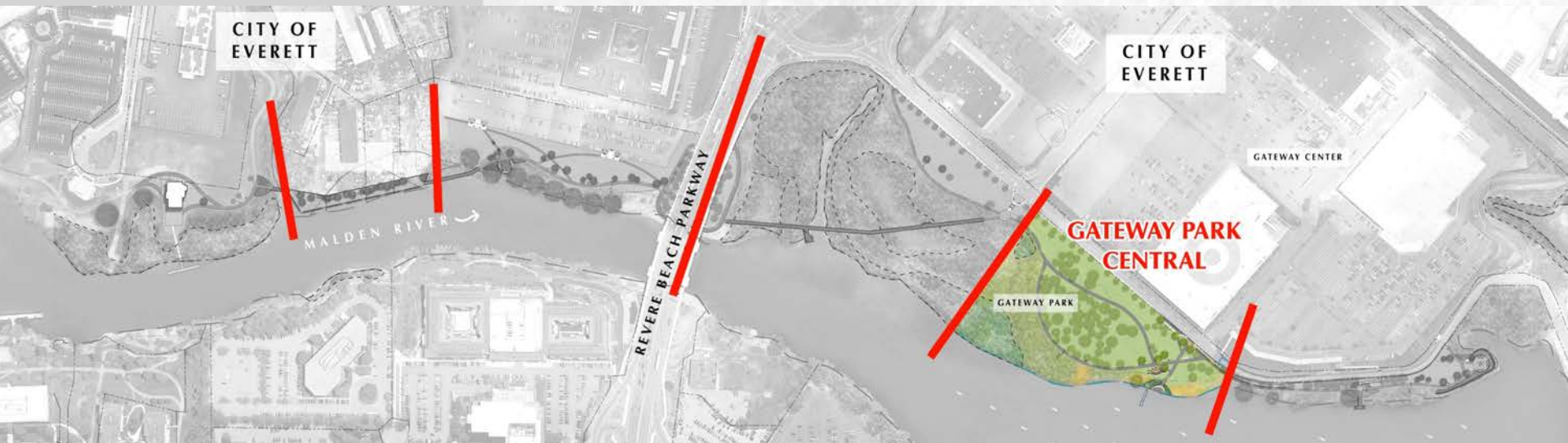


Plan 1

EVERETT RIVERFRONT PLAN

Riverfront Plan Details

Gateway Park Central



EVERETT RIVERFRONT PLAN

Riverfront Plan Details

Gateway Park Central – Existing Conditions



EVERETT RIVERFRONT PLAN

Riverfront Plan Details

Gateway Park Central – Enlarged Plan



Plan 2

EVERETT RIVERFRONT PLAN

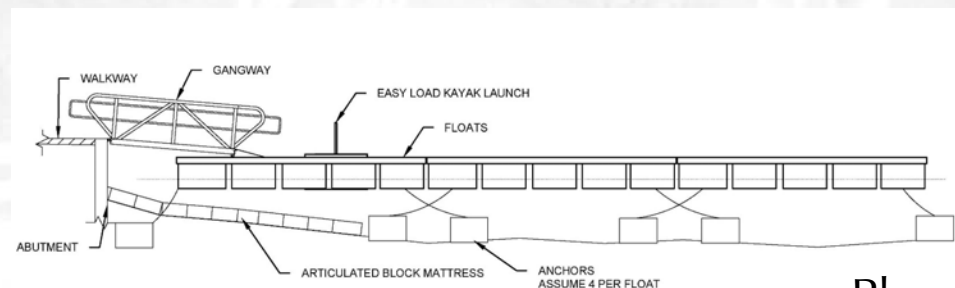
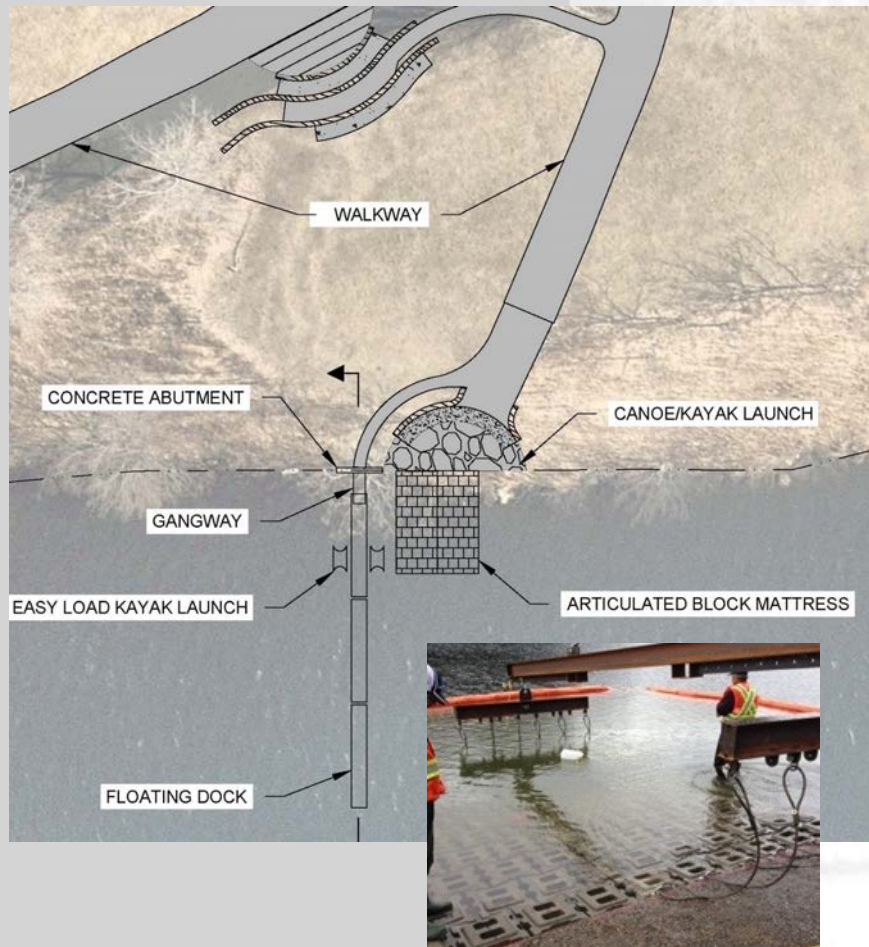


© Shadley Associates, P.C.

EVERETT RIVERFRONT PLAN

Riverfront Plan Details

Gateway Park Central – Canoe / Kayak Launch



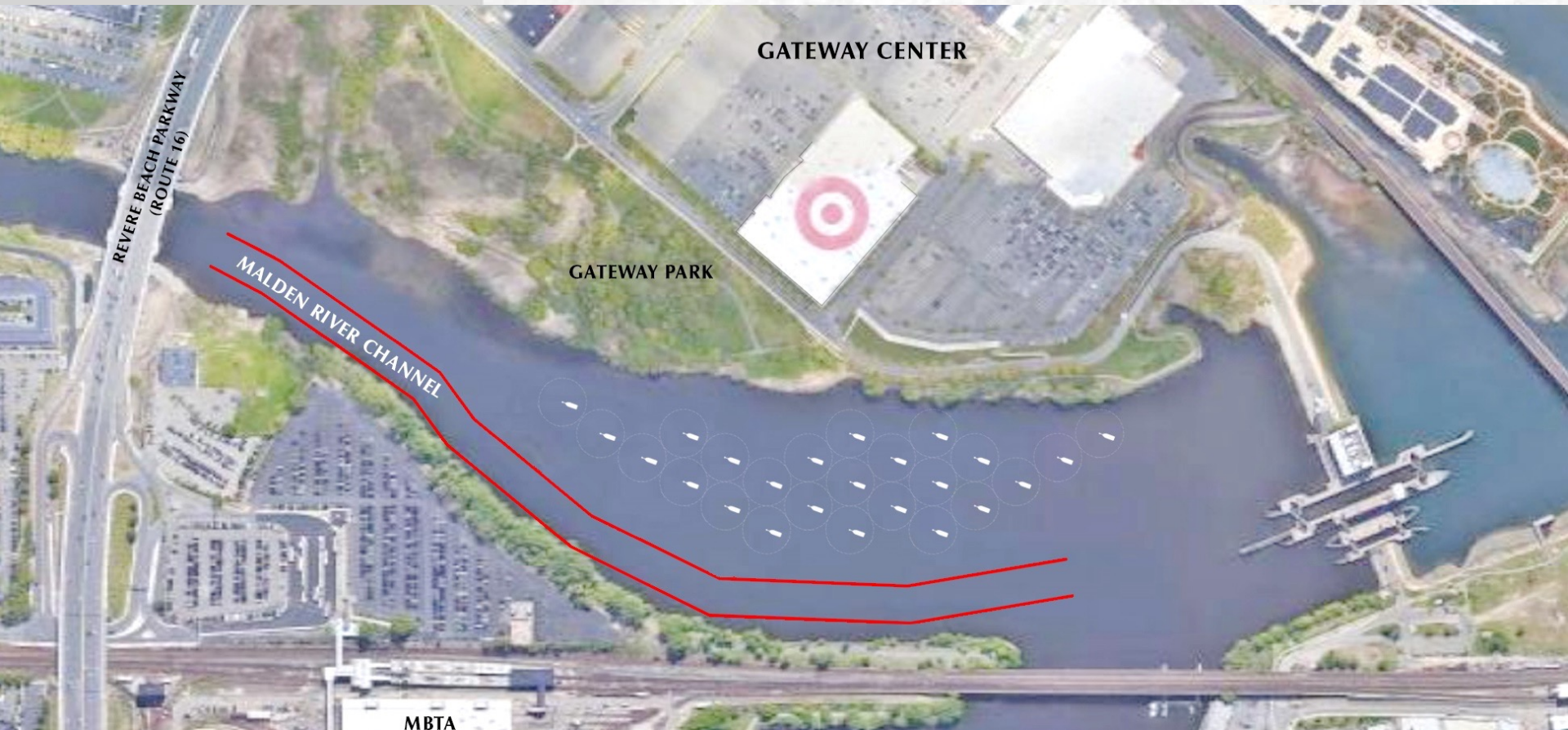
Plan 2

EVERETT RIVERFRONT PLAN

Riverfront Plan Details

Planning for Possible Boat Moorings

- Intended to serve Everett Residents, maximum 25' boat length
- Quantity will be based on *demand* and *other river uses*
- Maintain federal navigation channel



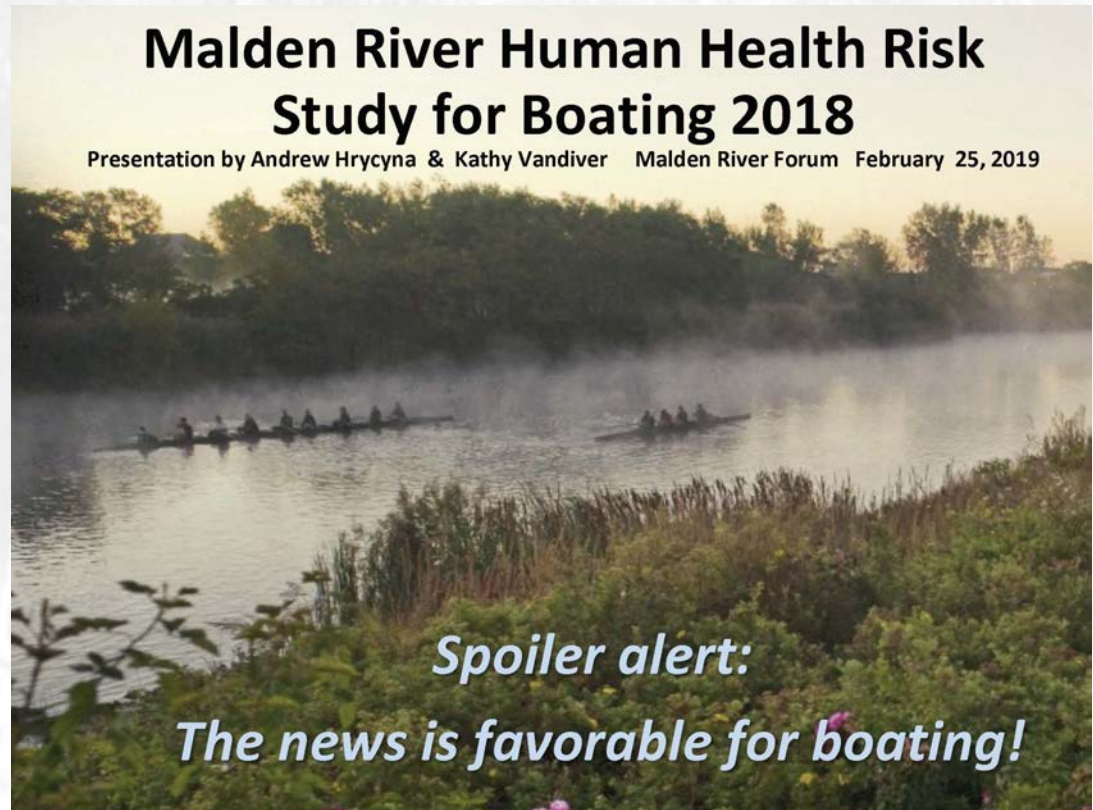
EVERETT RIVERFRONT PLAN

Riverfront Plan Details

Water Quality

“The sediments do not pose a health risk that should prevent people from boating on the Malden River.”

– Malden River Human Health Risk Study for Boating 2018



EVERETT RIVERFRONT PLAN

Recent Waterfront Improvements



Boating Advisory – Be Safe!

www.mysticriver.org/boatingadvisory

Twitter: @safemystic

MYSTIC DAILY BOATING ADVISORY

HOW SAFE IS IT TO BOAT TODAY?

These estimates of water quality conditions are generated by an automated bacteria prediction model and by additional cyanobacteria testing during boating season. For more on what the estimates mean and how they are arrived at, see the questions below.

Mystic River

MYSTIC VALLEY PARKWAY (RT 16)



Status: Good

Low probability of elevated bacteria levels.

Malden River

REVERE BEACH PARKWAY (RT 16)



Status: Advisory

High probability of elevated bacteria levels.

Upper Mystic Lake

SHANNON BEACH



Status: Advisory

High probability of elevated bacteria levels.

What do the categories mean?

GOOD

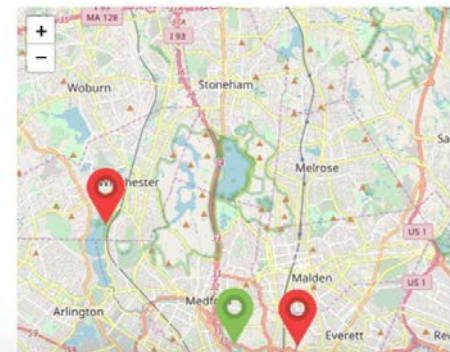
Boating is probably safe! The chances that *E. coli* bacteria levels exceed state recreational standards are low, and there is no evidence of a cyanobacteria bloom.

ADVISORY

The chances that *E. coli* bacteria levels exceed state recreational standards are high, or there is evidence of a cyanobacteria bloom with concentrations exceeding state safety guidelines.

UNCERTAIN

There is no evidence of elevated bacteria levels, but screening values



EVERETT RIVERFRONT PLAN

Riverfront Plan Details

Gateway Park North



EVERETT RIVERFRONT PLAN

Riverfront Plan Details

Gateway Park North – Existing Conditions



EVERETT RIVERFRONT PLAN

Riverfront Plan Details

Gateway Park North - Boardwalk



Plan 3

EVERETT RIVERFRONT PLAN

Riverfront Plan Details

Village Landing Park



EVERETT RIVERFRONT PLAN

Riverfront Plan Details

Village Landing Park – Existing Conditions



EVERETT RIVERFRONT PLAN

Riverfront Plan Details



Village Landing Park

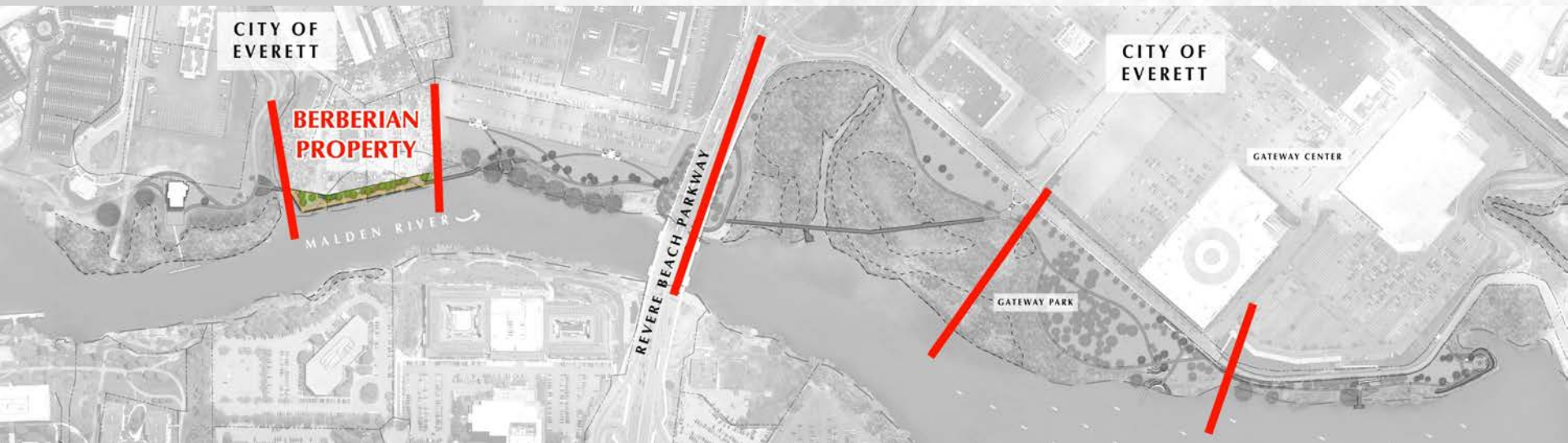


Plan 4

EVERETT RIVERFRONT PLAN

Riverfront Plan Details

Berberian Property



EVERETT RIVERFRONT PLAN

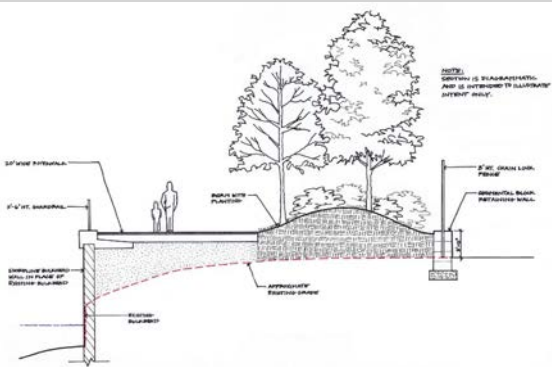
Riverfront Plan Details

Berberian Property – Existing Conditions



EVERETT RIVERFRONT PLAN

Riverfront Plan Details



Berberian Property

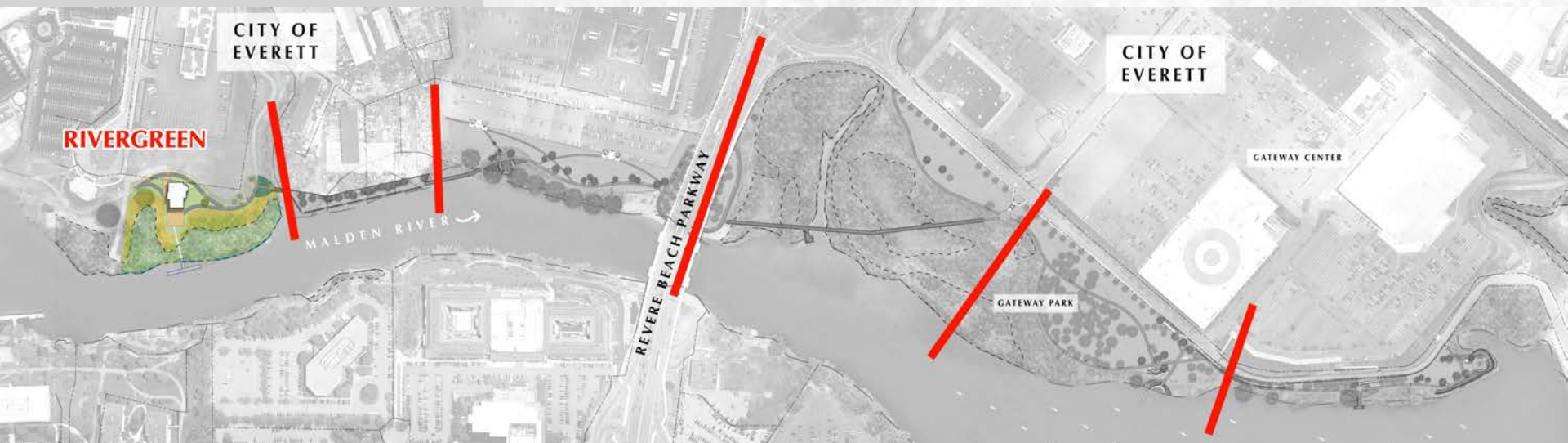


Plan 5

EVERETT RIVERFRONT PLAN

Riverfront Plan Details

Rivergreen



EVERETT RIVERFRONT PLAN

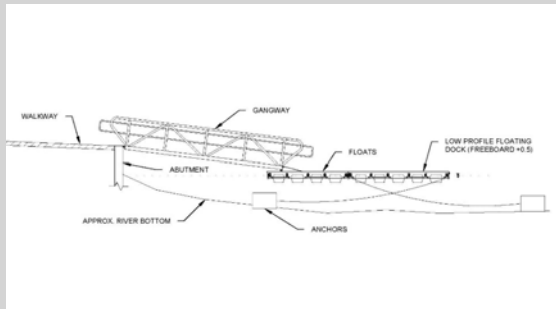
Riverfront Plan Details

Rivergreen – Existing Conditions

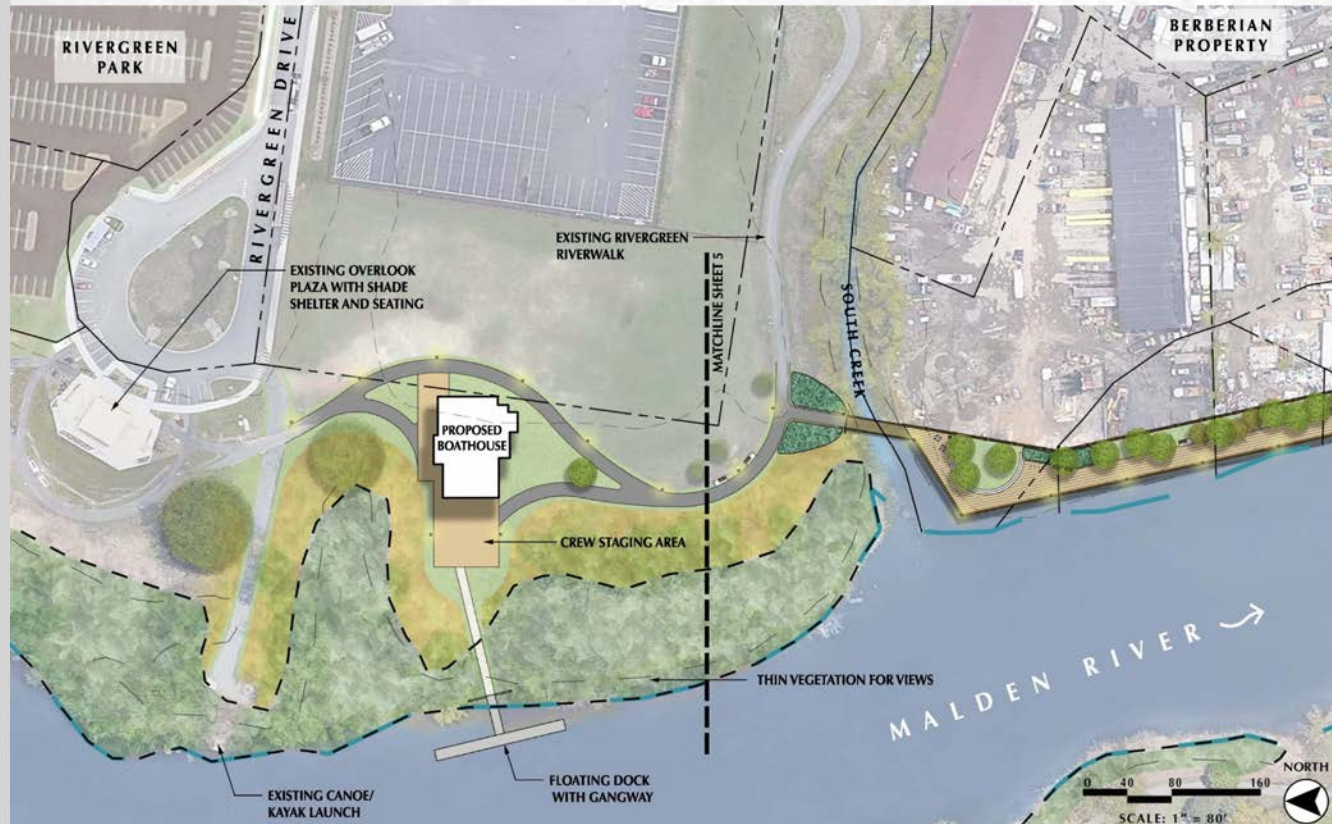


EVERETT RIVERFRONT PLAN

Riverfront Plan Details



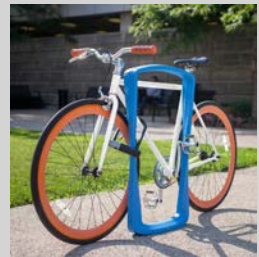
Rivergreen – Permanent Boathouse



Plan 6

EVERETT RIVERFRONT PLAN

Riverfront Plan Details



Site Furnishings



Full Meeting Clarification Questions

- **How does the Riverfront Plan connect with other bike/walking trails?**
It will connect to other trails wherever possible! There is already a ped/bike underpass at Route 16, the Northern Strand Community Trail is under construction behind Gateway Plaza, and planning and funding are underway for a ped/bike bridge over the Mystic River just south of the dam.
- **Will the Riverfront be open and free to the public?**
Yes, the Riverfront will be fully open and free to the public.
- **What is the width of the Riverfront Walkway and what will it accommodate?**
The Riverfront Plan calls for a 10' width clear on the main route and boardwalks. This can be re-evaluated in final design phases as the project moves forward.
- **Can you please explain the proposed mooring plan in more detail, and describe the City's and MyRWA's position on it?**
The plan for the moorings in the river is a CONCEPT, a VISION. The plan will evolve with discussions with groups, abutters, and boaters, as the river is a shared resource.

Discussion & Breakout Rooms

- **Do you have questions about the plan?**
- **What do you like most about the plan? What do you like the least?**
 - Boardwalk through wetland at Gateway Park
 - Canoe/kayak launch at Gateway Park
 - Boathouse at Rivergreen
 - Pavilion and picnic area at Village Landing Park
 - Overlook pier at Gateway Park
 - Multi-use path
 - Plaza with public art
 - Environmental restoration
 - Boat moorings
- **What do you think is missing from the plan?**
- **What are the biggest issues/challenges you see?**

EVERETT RIVERFRONT PLAN

Next Steps

- Continue to develop individual projects that improve the riverfront and the environment (Rivergreen boathouse, environmental work, public involvement).
- Identify and obtain funding for phased construction.
- For the funded areas: prepare field survey, perform final design, obtain all permits, bid and construct.

THE CREATION OF THE RIVERFRONT IS A MULTI-YEAR PROJECT THAT WILL HAVE SIGNIFICANT COMMUNITY INVOLVEMENT.



EVERETT RIVERFRONT PLAN

Thank you for participating!

*The City and MyRWA want to hear more from you about the Riverfront
Please participate in the survey below:*

<https://forms.gle/fdNJuCvwrhngzWRFA>

Or submit your additional comments to:

Tom Philbin, City of Everett
tom.philbin@ci.everett.ma.us

Project information can be found at:
www.ci.everett.ma.us

Comments will be received until June 4, 2021