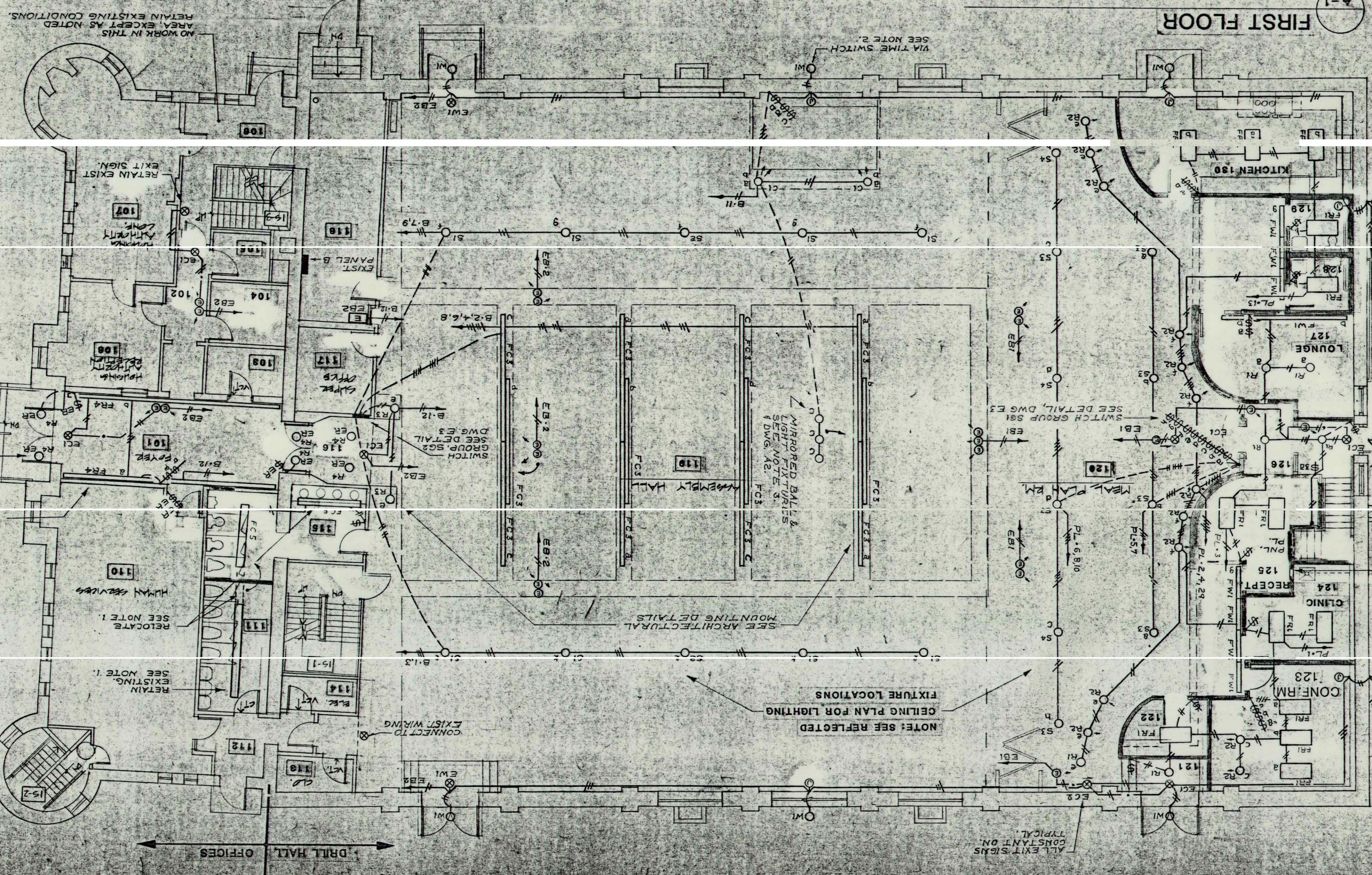
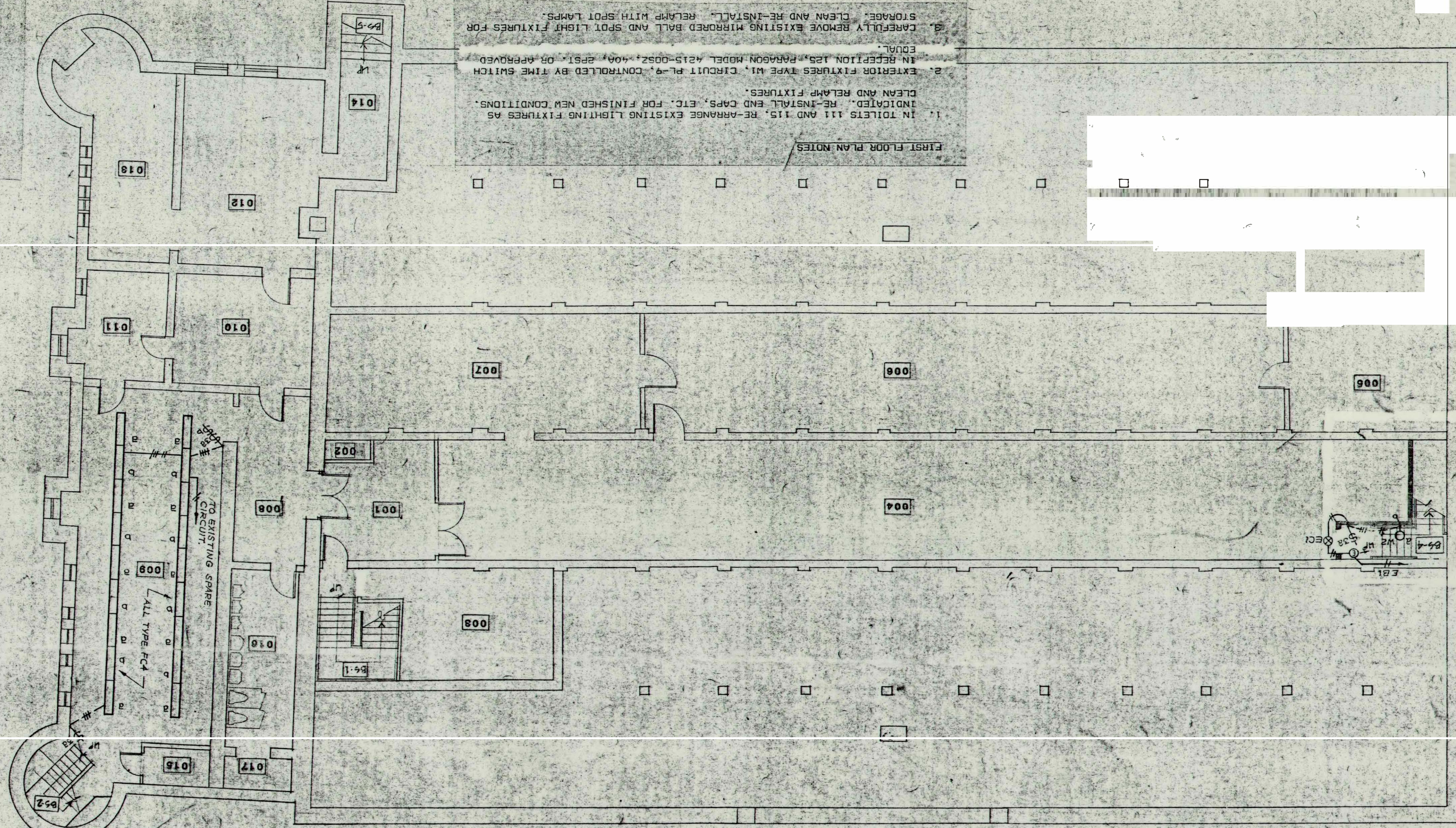
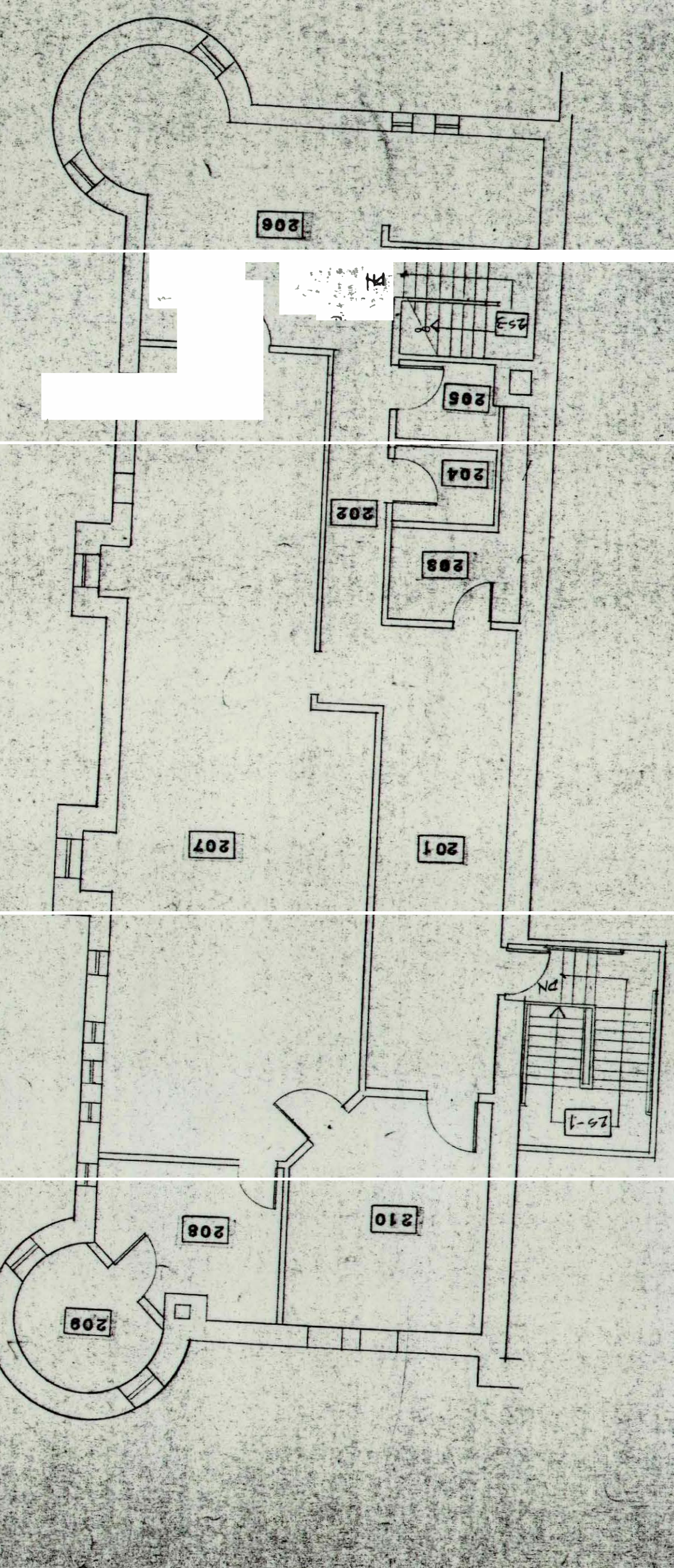


FIRST FLOOR PLAN NOTES
 1. IN TOILETS 111 AND 115, RE-ARRANGE EXISTING LIGHTING FIXTURES AS INDICATED. RE-INSTALL END CAPS, ETC. FOR FINISHED NEW CONDITIONS. CLEAN AND RE-LAMP FIXTURES.
 2. EXTERIOR FIXTURES TYPE M1, CIRCUIT PL-9, CONTROLLED BY TIME SWITCH IN RECEPTION 125, PARAGON MODEL 4213-002Z, 400, FIRST, ON APPROVED. COLOR.
 3. CAREFULLY REMOVE EXISTING MIRRORED BALL AND SPOT LIGHT FIXTURES FOR STORAGE. CLEAN AND RE-INSTALL. RE-LAMP WITH SPOT LAMPS.

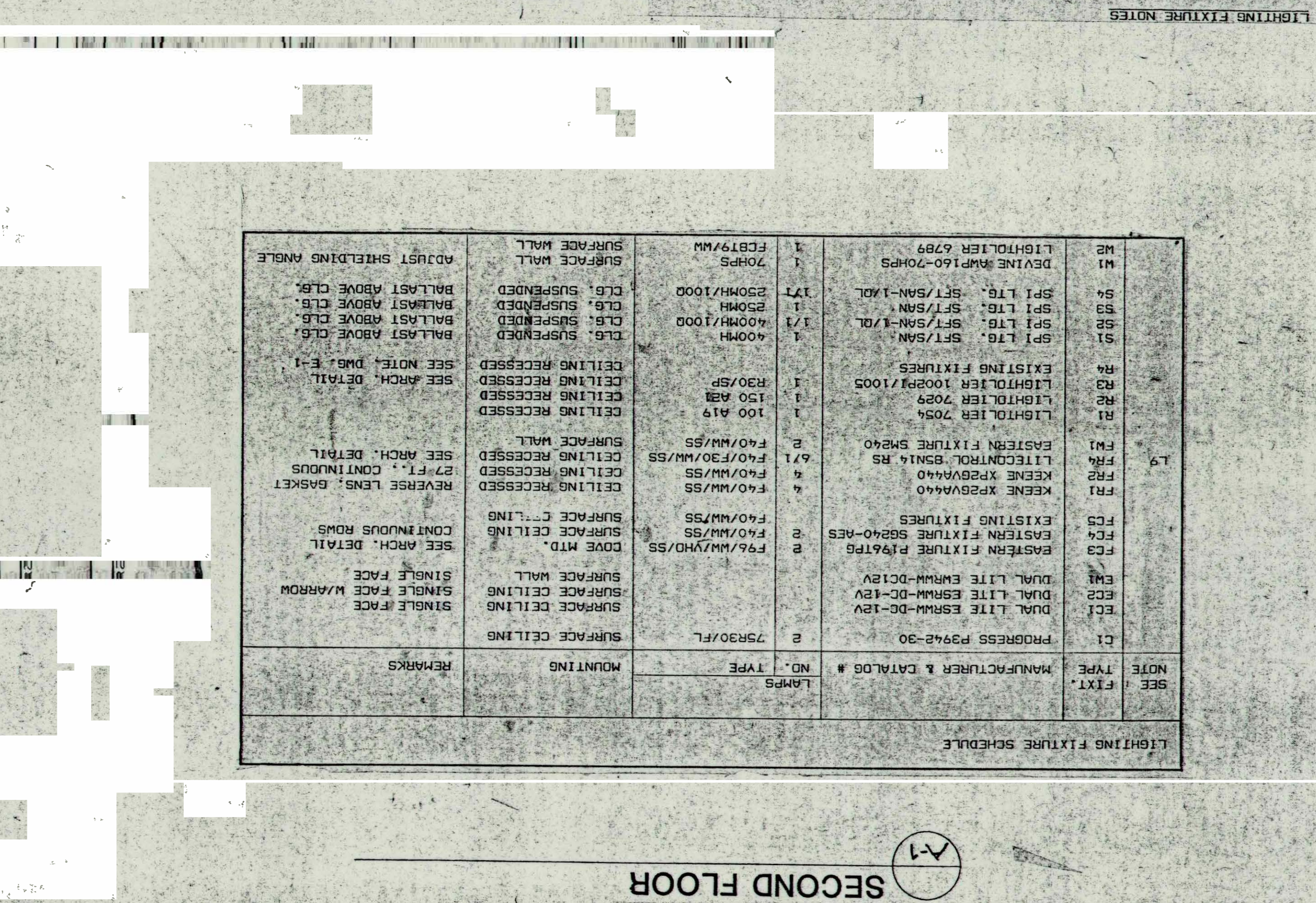


LIGHTING FIXTURE SCHEDULE

SEE NOTE	FIXT. TYPE	MANUFACTURER & CATALOG #	LAMPS	REMARKS
L1	PROGRESS P942-30		2 75W/FL	SURFACE CEILING
L2	DUAL LITE ESMH-DC-12V		2 75W/FL	SURFACE CEILING
L3	DUAL LITE ESMH-DC-12V		2 75W/FL	SURFACE CEILING
L4	EMT			SURFACE WALL
L5	FC4	EASTERN FIXTURE S8240-RS	2 75W/MH/SS	DOVE NIB
L6	FC3	EXISTING FIXTURES		SURFACE CEILING
L7	FR1	KEENE X262V440	4 75W/MH/SS	REVERSE LENS; GASSET
L8	FR2	KEENE X262V440	4 75W/MH/SS	CEILING RECESSED
L9	FR4	LITECONTROL 5214-RS	4 75W/MH/SS	CEILING RECESSED
L10	FR1	KEENE X262V440	4 75W/MH/SS	CEILING RECESSED
L11	FR1	KEENE X262V440	4 75W/MH/SS	CEILING RECESSED
L12	FR1	KEENE X262V440	4 75W/MH/SS	CEILING RECESSED
L13	FR1	KEENE X262V440	4 75W/MH/SS	CEILING RECESSED
L14	FR1	KEENE X262V440	4 75W/MH/SS	CEILING RECESSED
L15	FR1	KEENE X262V440	4 75W/MH/SS	CEILING RECESSED
L16	FR1	KEENE X262V440	4 75W/MH/SS	CEILING RECESSED
L17	FR1	KEENE X262V440	4 75W/MH/SS	CEILING RECESSED
L18	FR1	KEENE X262V440	4 75W/MH/SS	CEILING RECESSED
L19	FR1	KEENE X262V440	4 75W/MH/SS	CEILING RECESSED
L20	FR1	KEENE X262V440	4 75W/MH/SS	CEILING RECESSED
L21	FR1	KEENE X262V440	4 75W/MH/SS	CEILING RECESSED
L22	FR1	KEENE X262V440	4 75W/MH/SS	CEILING RECESSED
L23	FR1	KEENE X262V440	4 75W/MH/SS	CEILING RECESSED
L24	FR1	KEENE X262V440	4 75W/MH/SS	CEILING RECESSED
L25	FR1	KEENE X262V440	4 75W/MH/SS	CEILING RECESSED
L26	FR1	KEENE X262V440	4 75W/MH/SS	CEILING RECESSED
L27	FR1	KEENE X262V440	4 75W/MH/SS	CEILING RECESSED
L28	FR1	KEENE X262V440	4 75W/MH/SS	CEILING RECESSED
L29	FR1	KEENE X262V440	4 75W/MH/SS	CEILING RECESSED
L30	FR1	KEENE X262V440	4 75W/MH/SS	CEILING RECESSED
L31	FR1	KEENE X262V440	4 75W/MH/SS	CEILING RECESSED
L32	FR1	KEENE X262V440	4 75W/MH/SS	CEILING RECESSED
L33	FR1	KEENE X262V440	4 75W/MH/SS	CEILING RECESSED
L34	FR1	KEENE X262V440	4 75W/MH/SS	CEILING RECESSED
L35	FR1	KEENE X262V440	4 75W/MH/SS	CEILING RECESSED
L36	FR1	KEENE X262V440	4 75W/MH/SS	CEILING RECESSED
L37	FR1	KEENE X262V440	4 75W/MH/SS	CEILING RECESSED
L38	FR1	KEENE X262V440	4 75W/MH/SS	CEILING RECESSED
L39	FR1	KEENE X262V440	4 75W/MH/SS	CEILING RECESSED
L40	FR1	KEENE X262V440	4 75W/MH/SS	CEILING RECESSED
L41	FR1	KEENE X262V440	4 75W/MH/SS	CEILING RECESSED
L42	FR1	KEENE X262V440	4 75W/MH/SS	CEILING RECESSED
L43	FR1	KEENE X262V440	4 75W/MH/SS	CEILING RECESSED
L44	FR1	KEENE X262V440	4 75W/MH/SS	CEILING RECESSED
L45	FR1	KEENE X262V440	4 75W/MH/SS	CEILING RECESSED
L46	FR1	KEENE X262V440	4 75W/MH/SS	CEILING RECESSED
L47	FR1	KEENE X262V440	4 75W/MH/SS	CEILING RECESSED
L48	FR1	KEENE X262V440	4 75W/MH/SS	CEILING RECESSED
L49	FR1	KEENE X262V440	4 75W/MH/SS	CEILING RECESSED
L50	FR1	KEENE X262V440	4 75W/MH/SS	CEILING RECESSED
L51	FR1	KEENE X262V440	4 75W/MH/SS	CEILING RECESSED
L52	FR1	KEENE X262V440	4 75W/MH/SS	CEILING RECESSED
L53	FR1	KEENE X262V440	4 75W/MH/SS	CEILING RECESSED
L54	FR1	KEENE X262V440	4 75W/MH/SS	CEILING RECESSED
L55	FR1	KEENE X262V440	4 75W/MH/SS	CEILING RECESSED
L56	FR1	KEENE X262V440	4 75W/MH/SS	CEILING RECESSED
L57	FR1	KEENE X262V440	4 75W/MH/SS	CEILING RECESSED
L58	FR1	KEENE X262V440	4 75W/MH/SS	CEILING RECESSED
L59	FR1	KEENE X262V440	4 75W/MH/SS	CEILING RECESSED
L60	FR1	KEENE X262V440	4 75W/MH/SS	CEILING RECESSED
L61	FR1	KEENE X262V440	4 75W/MH/SS	CEILING RECESSED
L62	FR1	KEENE X262V440	4 75W/MH/SS	CEILING RECESSED
L63	FR1	KEENE X262V440	4 75W/MH/SS	CEILING RECESSED
L64	FR1	KEENE X262V440	4 75W/MH/SS	CEILING RECESSED
L65	FR1	KEENE X262V440	4 75W/MH/SS	CEILING RECESSED
L66	FR1	KEENE X262V440	4 75W/MH/SS	CEILING RECESSED
L67	FR1	KEENE X262V440	4 75W/MH/SS	CEILING RECESSED
L68	FR1	KEENE X262V440	4 75W/MH/SS	CEILING RECESSED
L69	FR1	KEENE X262V440	4 75W/MH/SS	CEILING RECESSED
L70	FR1	KEENE X262V440	4 75W/MH/SS	CEILING RECESSED
L71	FR1	KEENE X262V440	4 75W/MH/SS	CEILING RECESSED
L72	FR1	KEENE X262V440	4 75W/MH/SS	CEILING RECESSED
L73	FR1	KEENE X262V440	4 75W/MH/SS	CEILING RECESSED
L74	FR1	KEENE X262V440	4 75W/MH/SS	CEILING RECESSED
L75	FR1	KEENE X262V440	4 75W/MH/SS	CEILING RECESSED
L76	FR1	KEENE X262V440	4 75W/MH/SS	CEILING RECESSED
L77	FR1	KEENE X262V440	4 75W/MH/SS	CEILING RECESSED
L78	FR1	KEENE X262V440	4 75W/MH/SS	CEILING RECESSED
L79	FR1	KEENE X262V440	4 75W/MH/SS	CEILING RECESSED
L80	FR1	KEENE X262V440	4 75W/MH/SS	CEILING RECESSED
L81	FR1	KEENE X262V440	4 75W/MH/SS	CEILING RECESSED
L82	FR1	KEENE X262V440	4 75W/MH/SS	CEILING RECESSED
L83	FR1	KEENE X262V440	4 75W/MH/SS	CEILING RECESSED
L84	FR1	KEENE X262V440	4 75W/MH/SS	CEILING RECESSED
L85	FR1	KEENE X262V440	4 75W/MH/SS	CEILING RECESSED
L86	FR1	KEENE X262V440	4 75W/MH/SS	CEILING RECESSED
L87	FR1	KEENE X262V440	4 75W/MH/SS	CEILING RECESSED
L88	FR1	KEENE X262V440	4 75W/MH/SS	CEILING RECESSED
L89	FR1	KEENE X262V440	4 75W/MH/SS	CEILING RECESSED
L90	FR1	KEENE X262V440	4 75W/MH/SS	CEILING RECESSED
L91	FR1	KEENE X262V440	4 75W/MH/SS	CEILING RECESSED
L92	FR1	KEENE X262V440	4 75W/MH/SS	CEILING RECESSED
L93	FR1	KEENE X262V440	4 75W/MH/SS	CEILING RECESSED
L94	FR1	KEENE X262V440	4 75W/MH/SS	CEILING RECESSED
L95	FR1	KEENE X262V440	4 75W/MH/SS	CEILING RECESSED
L96	FR1	KEENE X262V440	4 75W/MH/SS	CEILING RECESSED
L97	FR1	KEENE X262V440	4 75W/MH/SS	CEILING RECESSED
L98	FR1	KEENE X262V440	4 75W/MH/SS	CEILING RECESSED
L99	FR1	KEENE X262V440	4 75W/MH/SS	CEILING RECESSED
L100	FR1	KEENE X262V440	4 75W/MH/SS	CEILING RECESSED



LIGHTING FIXTURE NOTES
 L1. Fixtures shall be furnished and installed complete with all accessories, to meet job conditions.
 L2. Fixtures submitted as equal or substitutions for the specified fixture shall provide the same appearance, shape, finish and light distribution and shall not exceed critical physical dimensions of the specified units.
 L3. Verify ceiling systems being installed and provide correct fixture suspension system, air diffusers, etc.
 L4. Unless indicated otherwise, fixture finishes shall be selected by the architect from the manufacturer's standard finishes for the specified fixture.
 L5. All fixtures shall be provided with lamps. Lamps shall be as scheduled and shall be compatible with the fixture manufacturer's lamp recommendations.
 L6. Where available, or unless noted otherwise, fluorescent lamps shall be Sylvania Superpower, General Electric Watt-Right.
 L7. Ballasts for fluorescent fixtures shall be General Electric Next-Hi-Start, Advance Mark III, Universal SLH, or approved equal low temperature, full output type, rated 70 watt (maximum) input for two 36 watt rapid start lamps operating at stabilized voltage and temperature.
 L8. Lighting fixture positions shown on plans are approximate. Refer to architectural details and reflected ceiling plans for the relation of ceiling mounted lighting fixtures to the ceiling suspension system, air diffusers, etc.
 L9. Fixture type FR1 shall be continuous length made up of 4 foot sections, as required. - A-1, 10, 11



ELECTRICAL LIGHTING

RENOVATION OF EVERETT ARMORY

DATE: 7/13/89
 SCALE: 1/8" = 1'-0"
 DRAWN BY: B.J.V.
 CHECKED BY: J.V.H.

NUMBER: 8824

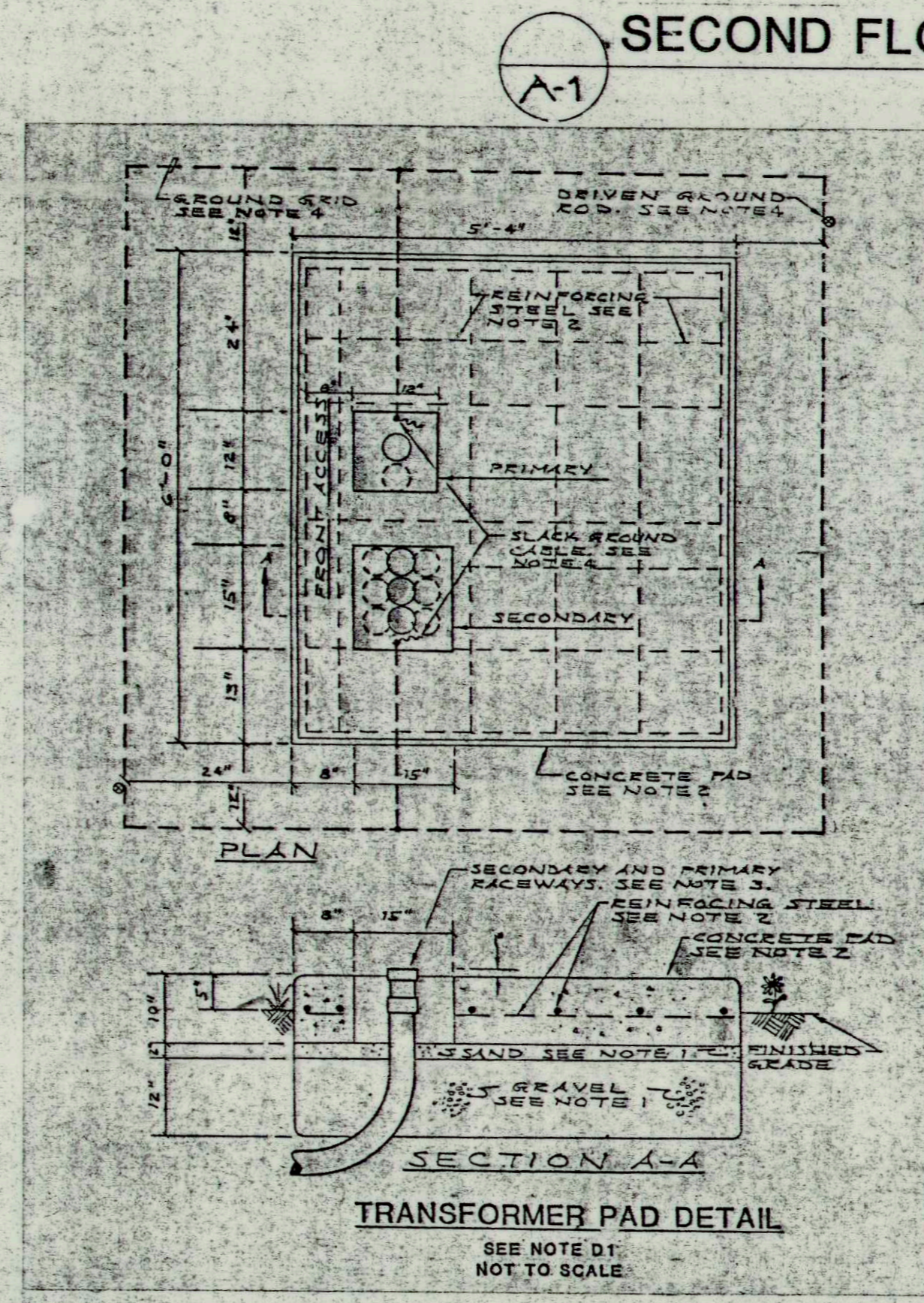
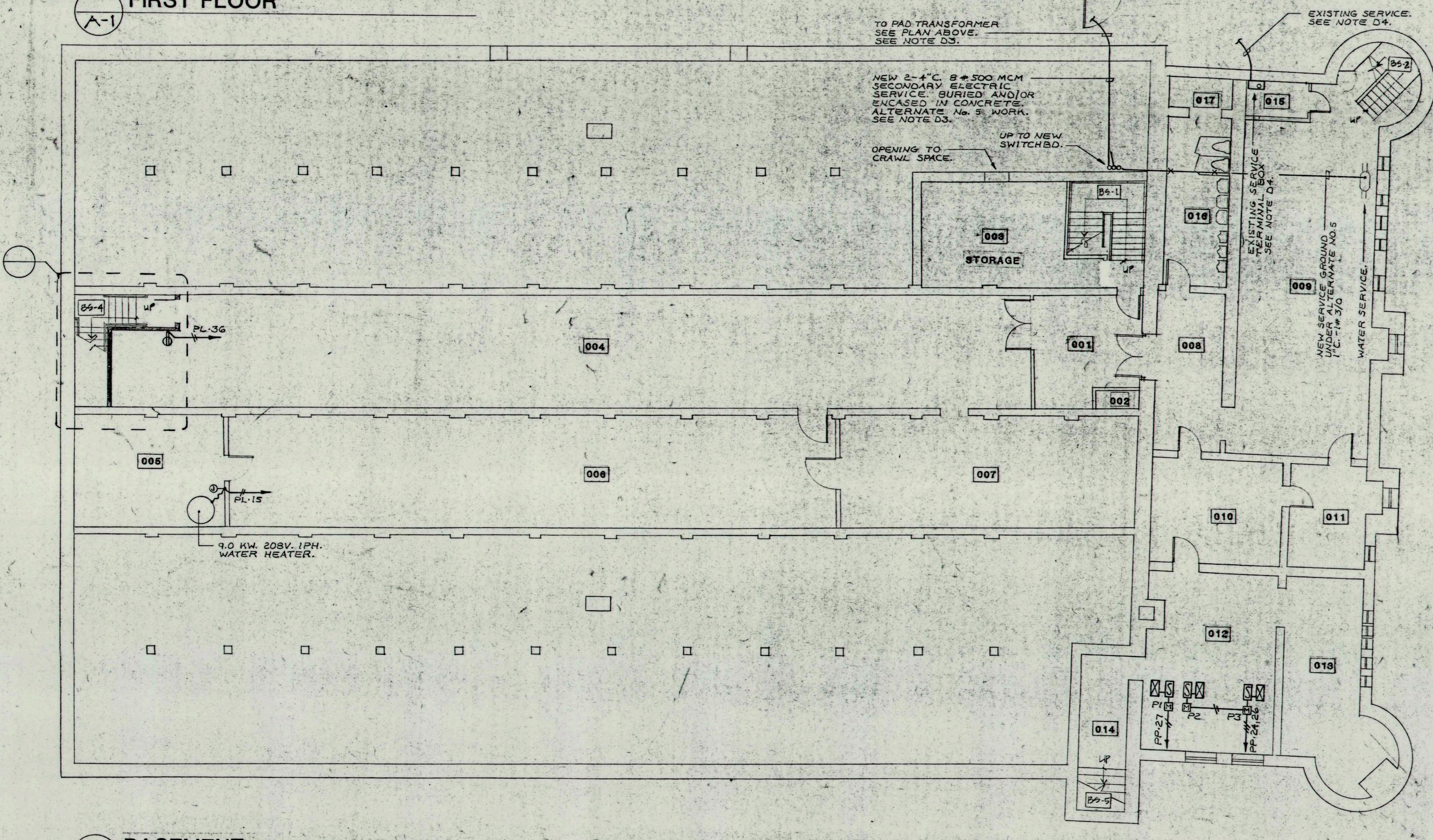
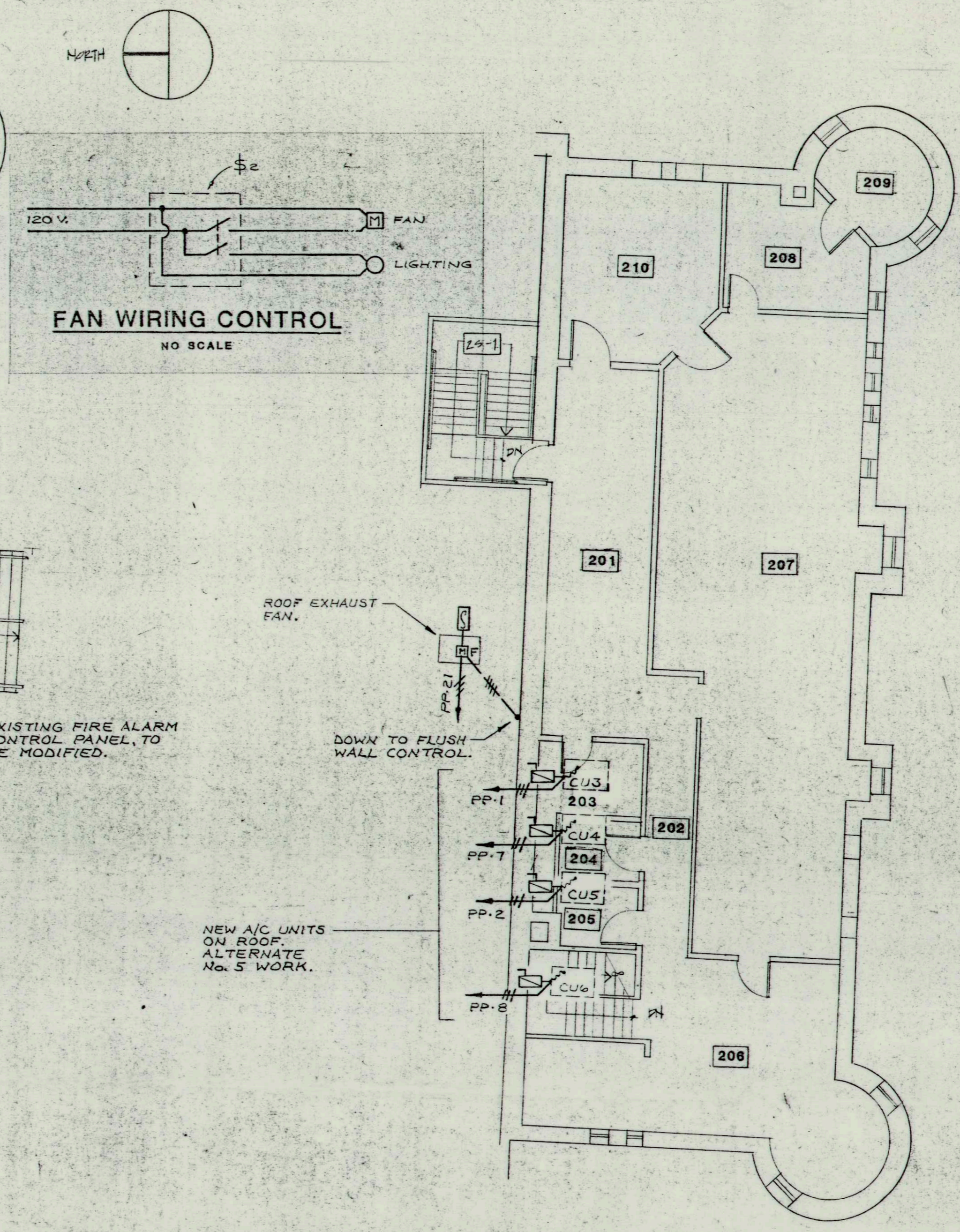
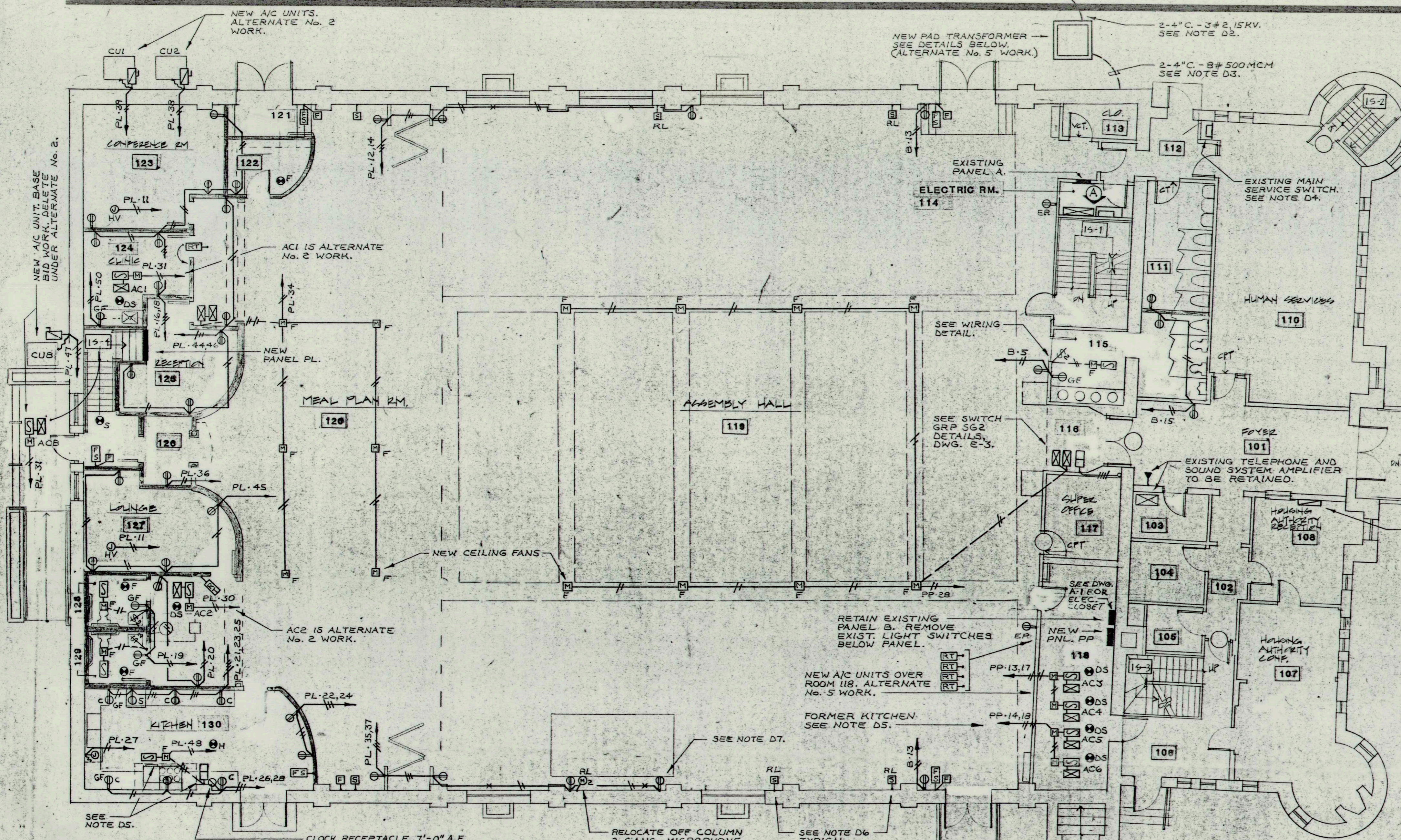
GENERAL NOTES

- Verify all door swings in the field prior to rough-in wiring for switches. Switches shall be located at the latch swing of double doors.
- Check drawings for outlet heights indicated shall be adjusted to avoid doors.
- Note and coordinate with architectural and mechanical drawings prior to roughing in or relocation of outlets, wiring and equipment.
- Consult reflected ceiling plans for the relation of ceiling mounted electrical devices and lighting fixtures to the ceiling suspension system, air diffusers, speakers, etc.
- Existing ducting electrical work shall be retained, except as indicated on the drawings. Also see specifications AND SYSTEMS.

SEAL: COMMERCIAL ELECTRICAL CONTRACTORS ASSOCIATION OF WASHINGTON

Setting, Annotations, Incorporated, Architect

SIA
 1400 15th St NW
 Boston, MA 02116
 (617) 482-5199



- TRANSFORMER PAD NOTES:**
- EXCAVATION, BACKFILL, SAND AND GRAVEL PROVIDED UNDER DIVISION 2. GRAVEL SHALL BE COMPACTED AND SAND SHALL BE THOROUGHLY WET JUST BEFORE CONCRETE POUR.
 - CONCRETE PAD AND STEEL REINFORCING FURNISHED AND INSTALLED UNDER DIVISION 3. REINFORCING STEEL SHALL BE LOCATED AS SHOWN IN MIDDLE OF SLAB. CONCRETE SHALL BE IN ACCORDANCE WITH MIX #4, STANDARD 0811.
 - PRIMARY AND SECONDARY RACEWAYS FURNISHED AND INSTALLED UNDER DIVISION 15. RACEWAYS SHALL BE FOUR-INCH MINIMUM PVC-40 PLASTIC, INSTALLED AS SHOWN, BEFORE SLAB IS POURED. USE 3/8 INCH RADIUS BENDS, WITH COUPLINGS, NIPPLES AND BUSHINGS AS REQUIRED. TERMINATIONS OF CONDUITS SHALL BE LOCATED EXACTLY AS SHOWN. THE NIPPLE AND BUSHING SHOULD BE INSTALLED AFTER THE TRANSFORMER IS PLACED AND BEFORE THE CABLES ARE PULLED. TEMPORARILY PLUG CONDUITS UNTIL THE CABLE IS INSTALLED.
 - GROUND GRID FURNISHED AND INSTALLED UNDER DIVISION 16. INSTALL #10 B.D. 7 STRAND BARE COPPER WIRE LOOP 1 FT. 0 IN. BELOW GRADE. BOND TO ALL EXPOSED METALLIC CONDUIT AND LEAVE 3 FT. 0 IN. OF WIRE ABOVE PAD FOR GROUNDING TRANSFORMER AT TWO OPPOSITE POINTS IN THE CABLE CONDUIT OPENINGS. PHOS-COPPER BRACE CONNECTION, CAMEL, OR USE TWO APPROVED CONNECTORS PER JOINT. INSTALL TWO 8 FT. GALVANIZED STEEL (3/4 INCH) GROUND RODS WHERE SHOWN ON PLAN. LEAVE GRID EXPOSED UNTIL INSPECTED BY THE UTILITY COMPANY.
 - DETAILS MAY VARY. VERIFY THE REQUIREMENTS WITH THE MASSACHUSETTS ELECTRIC COMPANY.

- DRAWING ER NOTES:**
- NEW ELECTRIC SERVICE AND PAD TRANSFORMER IS ALTERNATE No. 5 WORK. SPECIFICATIONS.
 - NEW PRIMARY ELECTRIC SERVICE, BURIED 30 INCHES MINIMUM BELOW GRADE, ENCASED IN CONCRETE ENVELOPE, TO POLE ON EDGESTER STREET. SEE SITE PLAN.
 - EXISTING HOOD KITCHEN EXHAUST FAN (RM. 118) IS TO BE RELOCATED TO NEW KITCHEN 130. REMOVE WIRING TO PANEL B. AT EXISTING LOCATION. REWIRE AT NEW LOCATION. P. & I. NEW FLUSH WALL MOUNTED MANUAL MOTOR STARTER WITH PILOT AND NAME PLATE "HOOD EXHAUST FAN." SQUARE D NO. FS-10.
 - RELOCATE EXISTING MICROPHONE OUTLET OFF FACE OF COLUMN. RESTORE WIRING TO AMPLIFIER. RELOCATE SOUND COLUMNS, SAME MOUNTING HEIGHT. RESTORE WIRING TO AMPLIFIER.
 - EXPOSED RECEPTACLE WIRING AND OUTLETS. SURFACE WALL, MIDWAY BETWEEN FLOOR AND NEW HEATING EQUIPMENT.

Sterling Associates Incorporated Architects

SAA
286 Congress Street
Boston, MA 02108
(617) 482-5489

REVISION

NOV 19 1999

8824

DATE 7/13/99

SCALE 1/8" = 1'-0"

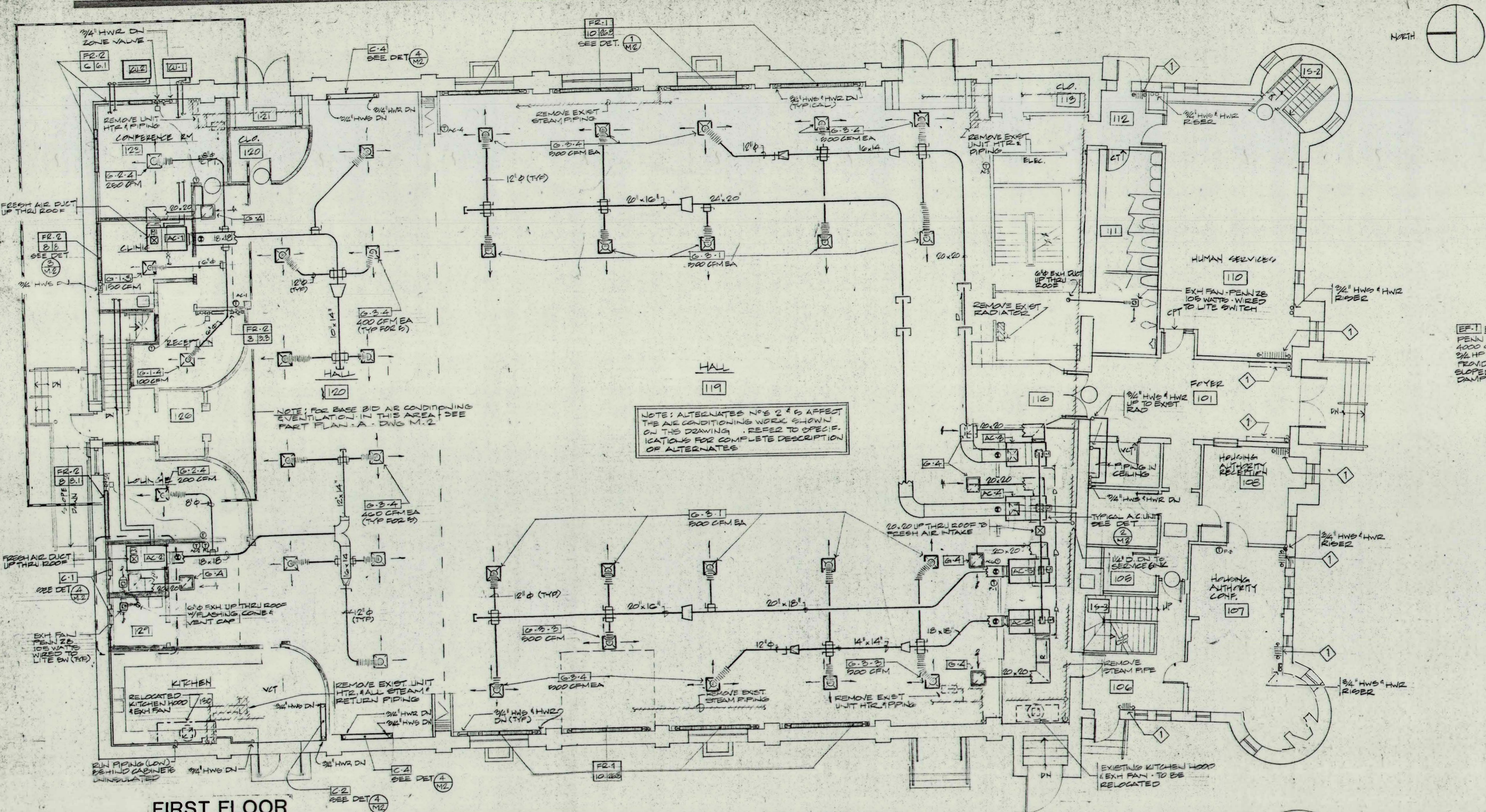
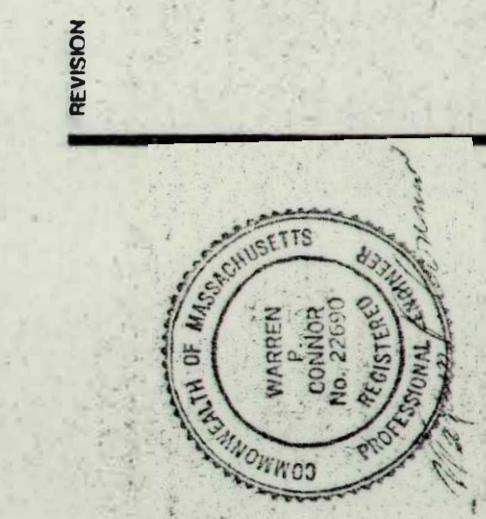
DRAWN BY RFR

CHECKED BY JWH

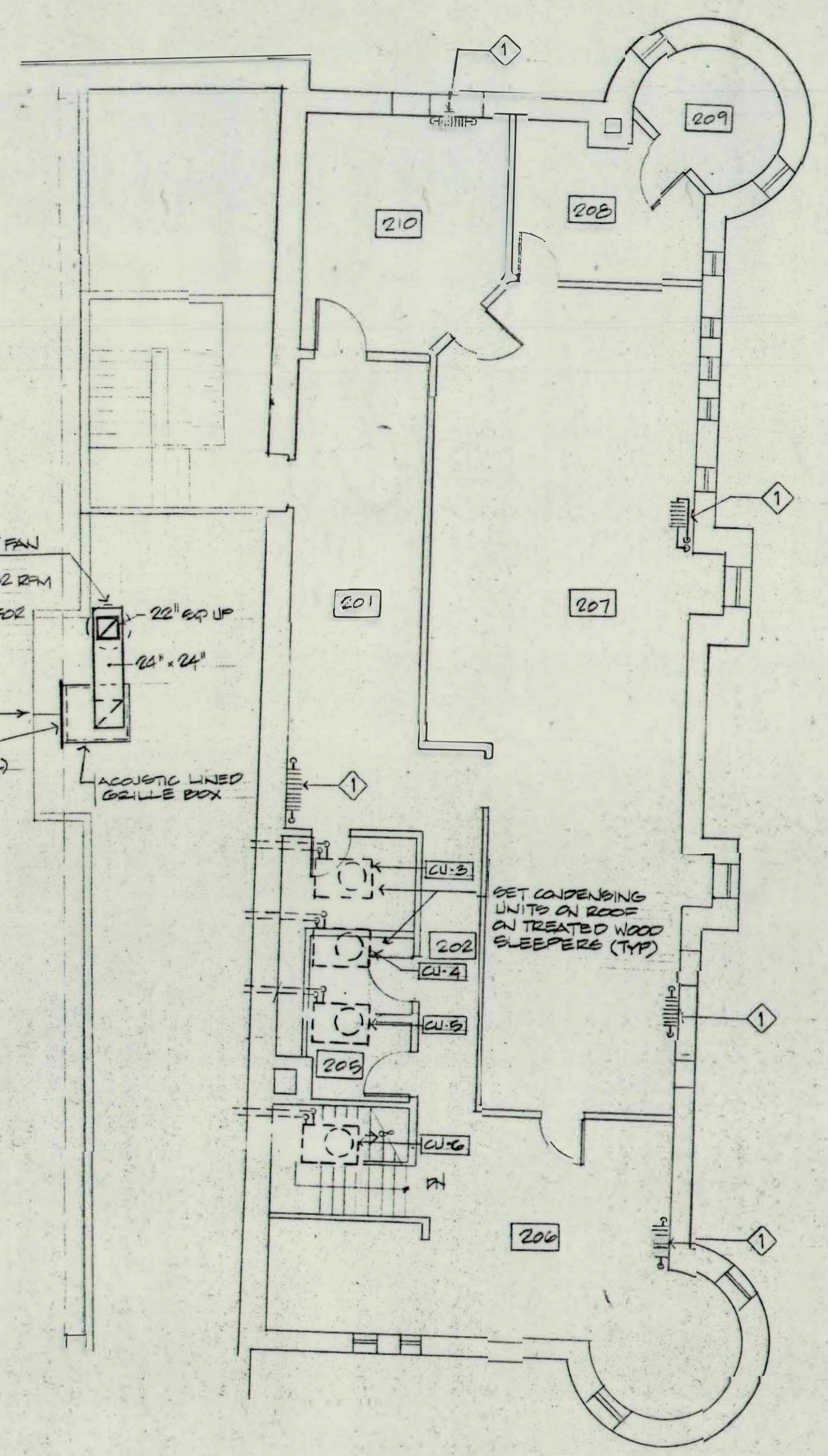
PROJECT RENOVATION OF EVERETT ARMORY

ELECTRICAL POWER AND SYSTEMS

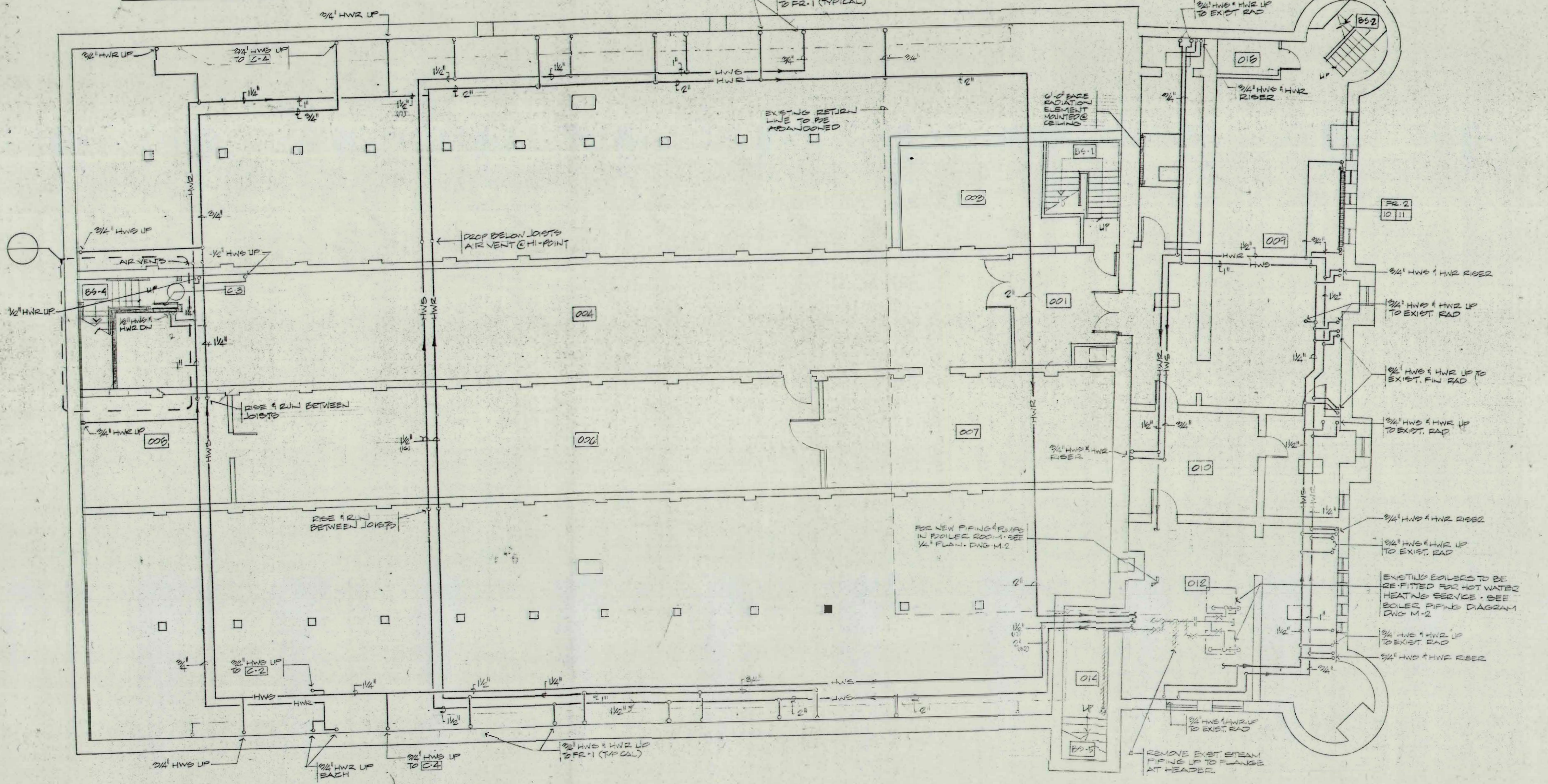
E-2



FIRST FLOOR



SECOND FLOOR



BASEMENT

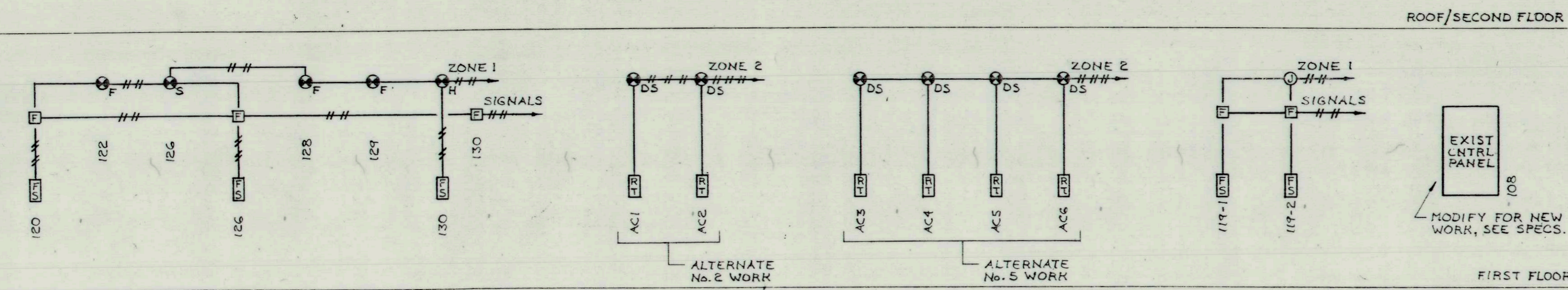
LEGEND	
— HWS	HOT WATER SUPPLY PIPING
— HWR	HOT WATER RETURN PIPING
---	EXISTING PIPING OR EQUIPMENT TO BE REMOVED
⬠	EXISTING RADIATOR TO BE RECONNECTED. SEE DETAIL 10-11
—	FLEXIBLE METAL DUCT CONNECTED TO DIFFUSER
⊕	SUPPLY DUCT @ VOLUME DAMPER @ DIFFUSER TAKE-OFF
⊕	GATE VALVE
⊕	BALL VALVE
⊕	THERMOSTAT
⊕	GELLS OR DIFFUSER
⊕	DIRECTION OF FLOW
⊕	NUMBER OF GELLS
⊕	RADIATOR
⊕	EXISTING RADIATOR
⊕	ACOUSTICALLY LINED RETURN AIR GELLS BOX
⊕	SMOKE DETECTOR: FURNISH WIRED TO STOP FAN BY ELECTRICAL CONTRACTOR. INSTALLED IN DUCT BY HVAC CONTRACTOR

NUMBER 8824
 DATE 7/13/89
 SCALE 1/8" = 1'-0"
 DRAWN BY CSEA
 CHECKED BY NTR

RENOVATION OF EVERETT ARMORY

HVAC

M-1



FIRE ALARM SYSTEM NEW WIRING

CIRCUIT SCHEDULE PANEL PL						
200 AMP. M.L.O. 208Y/120V. 3 PH. 4 W. 10,000 AIC						
NO.	CIRCUIT POLES	BKR. AMPS	TYPE	LOAD KVA	EQUIPMENT	LOCATION
LEFT SIDE						
1.	1	20		1.6	LIGHTING	121-124
2.	1	20		1.0	LIGHTING	125-127
3.	1	20		.9	LIGHTING	120 b
7.	1	20		.9	LIGHTING	120 a
9.	1	20		1.5	LIGHTING	EXTERIOR
11.	1	20		.4	H.V. CONTROLS	123, 127
13.	1	20		1.0	LIGHTING	128-130
15.	2	30		9.0	WATER HEATER	005
19.	1	20		.4	RECEPTACLES	128, 129
21.	1	20		1.2	RECEPTACLES	130
23.	1	20		.8	REFRIG.	130
25.	1	20		1.2	RECEPTACLE	130
27.	1	20		1.5	DISHWASHER	130
29.	1	20		.7	LIGHTING	120 VALANCE
31.	2	20		1.9	AC1 (ACB)	124 (126)
35.	1	20		.8	RECEPTACLE	BAND STAND
37.	1	20		1.0	RECEPTACLES	EXTERIOR
39.	3	70		16.0	CUB	127
45.	1	20		.8	RECEPTACLES	CUB
47.	3	25		4.9	CUB	EXTERIOR
53.	1	20			SPARE	
57.	1	20			SPARE	
RIGHT SIDE						
2.	1	20		1.1	LIGHTING	120 f, g
4.	1	20		1.2	LIGHTING	120 e, h
6.	1	20		.9	LIGHTING	120 d
8.	1	20		.9	LIGHTING	120 c
10.	1	20		.9	LIGHTING	120 h
12.	1	20		.8	RECEPTACLES	120
14.	1	20		1.2	RECEPTACLES	119
16.	1	20		1.0	RECEPTACLES	123, 122
18.	1	20		.8	RECEPTACLES	124
20.	1	20		.8	RECEPTACLES	120
22.	1	20		1.2	RECEPTACLE	130
24.	1	20		1.2	RECEPTACLE	130
26.	1	20		1.2	RECEPTACLE	130
28.	1	20		1.2	RECEPTACLE	130
30.	2	20		1.9	AC2	120
34.	1	20		.75	CEILING FANS	120
36.	1	20			RECEPTACLES	126, BSMT.
38.	3	70		16.0	CUB	EXT.
44.	1	20			RECEPTACLES	125
46.	1	20			RECEPTACLES	120
48.	1	20			EXHAUST FAN	130
50.	1	20			RECEPTACLE	124
52.	1	20			SPARE	
54.	1	20			SPARE	
56.	1	20			SPARE	

NEW PANEL PL SHALL BE TWO SECTIONS, 30 POLES PER SECTION, WITH FLUSH TRIM.
 * ALTERNATE No. 2 WORK. SPACES ONLY UNDER BASE BID.
 ** UTILIZE CIRCUIT PL-31 FOR UNIT ACB UNDER BASE BID, OR UNIT AC1 UNDER ALTERNATE No. 2. CIRCUIT No. PL-47 TO UNIT CUB IS BASE BID WORK. SPACE ONLY UNDER ALTERNATE No. 2.

CIRCUIT SCHEDULE PANEL PP						
200 AMP. M.L.O. 208Y/120V. 3 PH. 4 W.						
NO.	CIRCUIT POLES	BKR. AMPS	TYPE	KVA	EQUIPMENT	LOCATION
LEFT SIDE						
1.	3	70		12.8	CUB	ROOF
7.	3	70		12.8	CUB	ROOF
13.	2	20		1.9	AC3	118
17.	2	20		1.9	AC4	118
21.	3	20		1.0	ROOF EXH FAN	119
27.	3	20		.5	P1	012
33.	1	20			SPARE	
35.	1	20			SPARE	
RIGHT SIDE						
2.	3	70		12.8	CUB	ROOF
8.	3	70		12.8	CUB	ROOF
14.	2	20		1.9	AC5	118
18.	2	20		1.9	AC6	118
22.	1	20			SPARE	
24.	1	20		.4	P2	012
26.	1	20		.4	P3	012
28.	1	20		.8	CEILING FANS (B)	118
30.	1	20			SPARE	
32.	1	20			SPARE	
34.	1	20			SPARE	

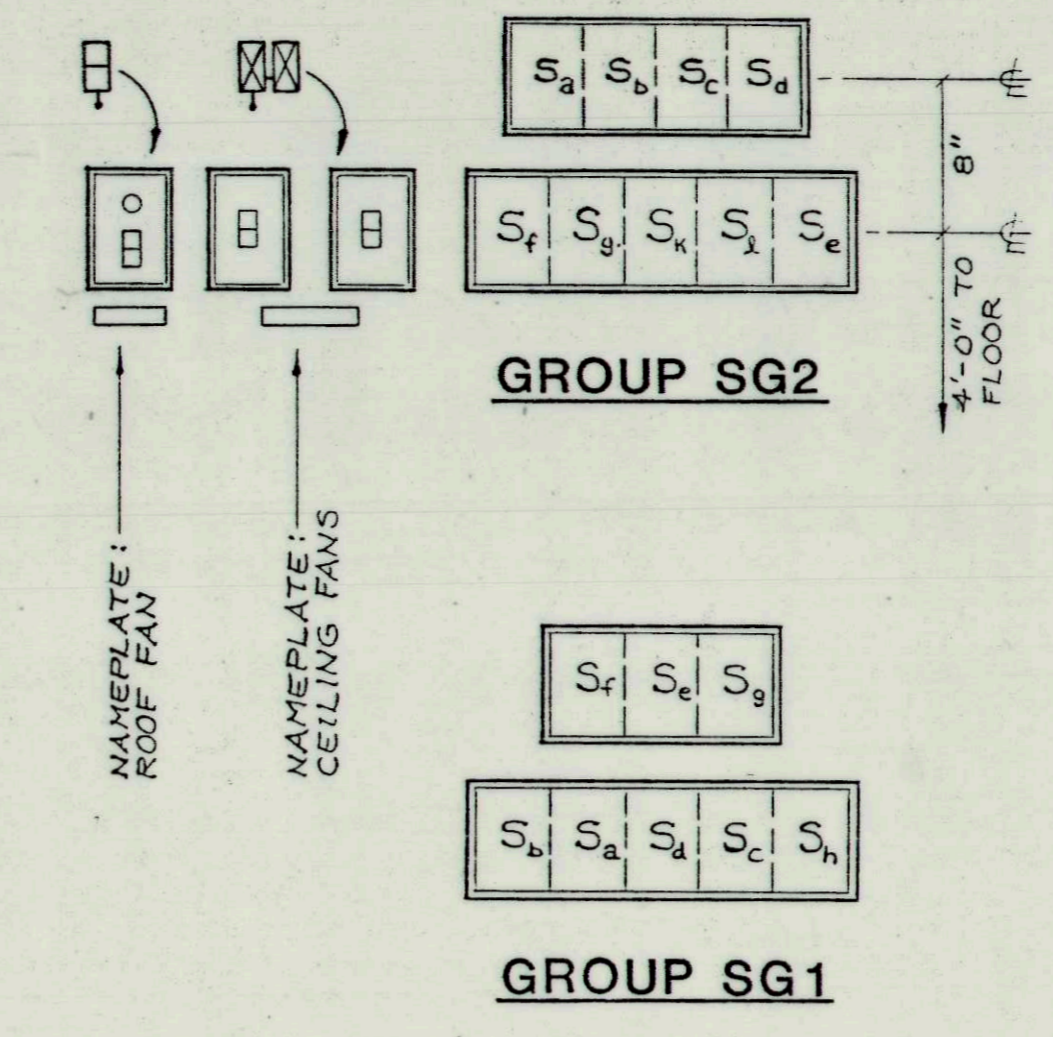
* DELETE CIRCUIT BREAKERS UNDER ALTERNATE No. 5. RETAIN SPACES.
 NEW PANEL PP SHALL BE BASE BID WORK, MODIFIED UNDER ALTERNATE No. 5 ONLY, AS INDICATED. PANEL SHALL BE SURFACE WALL MOUNTED, 42 POLE.

CIRCUIT SCHEDULE PANEL B (EXISTING)						
208Y/120V. 3 PH. 4 W.						
NO.	CIRCUIT POLES	BKR. AMPS	TYPE	KVA	EQUIPMENT	LOCATION
LEFT SIDE						
1.	1	20		.9	LIGHTING	119 k
3.	1	20		1.4	LIGHTING	119 l
5.	1	20		1.0	RECEPTACLES	115, 111
7.	1	20		1.4	LIGHTING	119 f
9.	1	20		.9	LIGHTING	119 g
11.	1	20		1.2	LIGHTING	BAND STAND
13.	1	20		.4	RECEPTACLES	119
RIGHT SIDE						
2.	1	20		1.8	LIGHTING	119 a
4.	1	20		.9	LIGHTING	119 b
6.	1	20		1.8	LIGHTING	119 c
8.	1	20		.9	LIGHTING	119 d
10.	1	20			RECEPTACLES	101, 111
12.	1	20		.9	LIGHTING	101, e

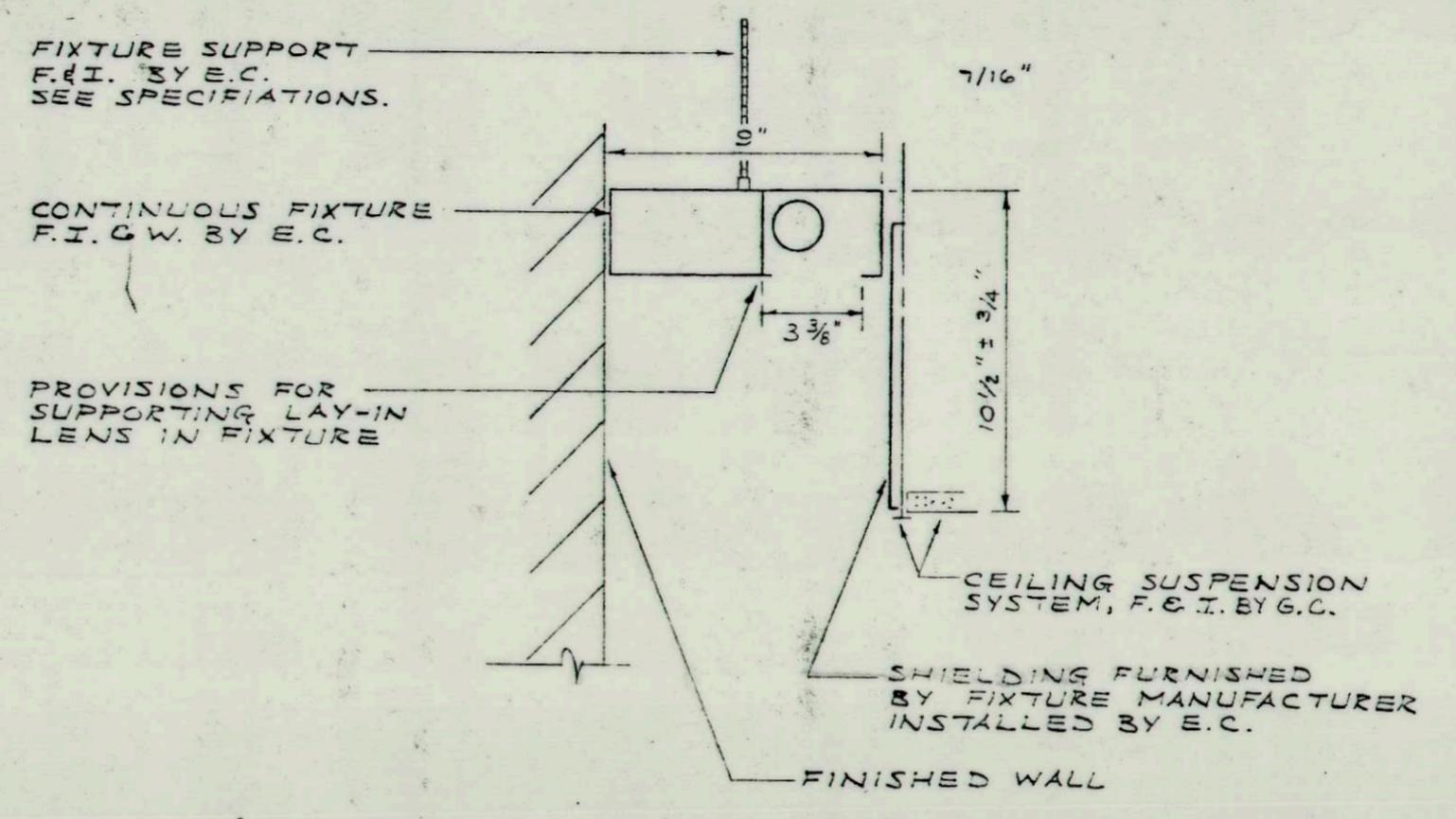
UTILIZE FREED AND SPARE CIRCUITS IN EXISTING PANEL B.

SWITCHBOARD SCHEDULE					
200 AMP. M.L.O. 208Y/120V. 3 PH. 4 W.					
NO.	CIRCUIT BREAKER	FRAME	TRIP	COND.	FEEDER WIRE
1.				2-4"	8#500 MCM
2.					8#500 MCM
3.					8#500 MCM
4.	3	800	600		4#500 MCM
5.					4#500 MCM
6.	2	225	225	2"	4#4/0, 1#4
7.	2	225	225	2"	4#4/0, 1#4

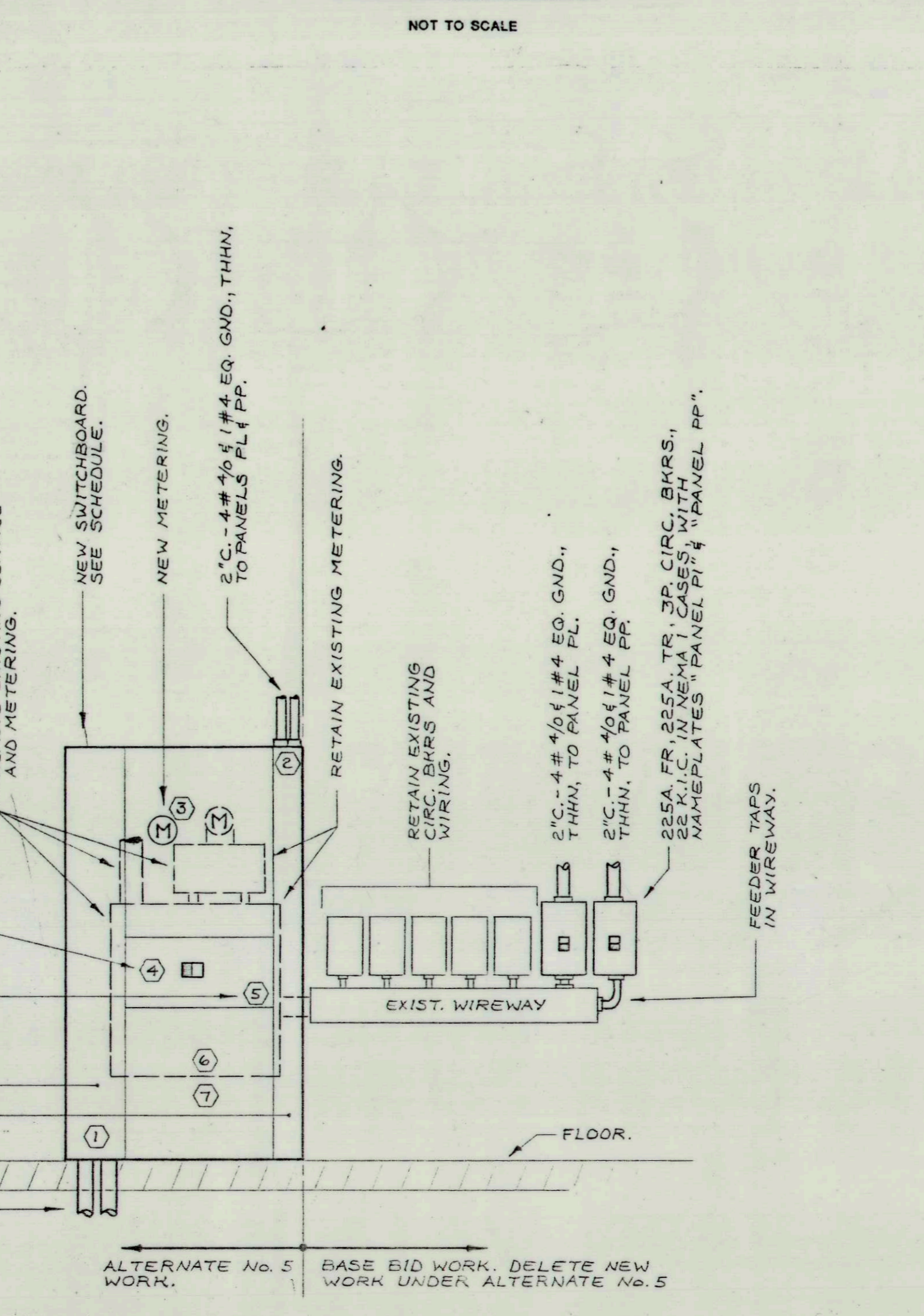
NEW SWITCHBOARD IS ALTERNATE No. 5 WORK. SEE SPECIFICATIONS AND ELEVATION A, DRAWING E-3.



SWITCH GROUP MOUNTING ARRANGEMENT



WALL SLOT FIXTURE FR4 MOUNTING DETAIL



ELEVATION A

- LEGEND**
- LIGHT OUTLETS WITH FIXTURES:**
- _{R1} CEILING FIXTURE. "R1" INDICATES FIXTURE TYPE. SEE SCHEDULE.
 - _W WALL FIXTURE. LETTER INDICATES SWITCH CONTROL.
 - INDICATES SIZE AND POSITION OF FIXTURE.
 - ⊗ ILLUMINATED EXIT SIGN, WITH DIRECTIONAL ARROWS AS INDICATED.
 - WALL WASH FIXTURE, ARROW INDICATES BEAM DIRECTION.
- EMERGENCY BATTERY LIGHTING SYSTEM:**
- EB1 EMERGENCY BATTERY UNIT EB1, SURFACE WALL MTD. BOTTOM 6'-6" A.F. NO FIXTURES.
 - EMERGENCY LIGHTING RACEWAY AND WIRING. NO.10 COPPER A.W.G. MINIMUM.
 - ⊕ SURFACE CEILING MTD. FIXTURE. ARROW INDICATES BEAM DIRECTION.
 - EB1 HOMERUN TO BATTERY UNIT EB1.
- TOGGLE SWITCHES** (MTD. 4'-0" A.F. EXCEPT AS NOTED)
- ⊕ SINGLE POLE. LETTER INDICATES CONTROLLED OUTLETS.
 - ⊕ DOUBLE POLE.
 - ⊕ THREE WAY.
 - ⊕ FOUR WAY.
 - ⊕ GANGED SWITCHES.
 - ⊕ DIMMER SWITCH, 600W.
- CONVENIENCE RECEPTACLES:** (MTD. 18" A.F., EXCEPT AS NOTED)
- ⊕ DUPLEX.
 - ⊕ DUPLEX. NUMERICAL INDICATES MOUNTING HEIGHT IN FEET.
 - ⊕ DUPLEX. MTD. 9" ABOVE COUNTER VERIFY CLEARANCE WITH COUNTER BACKSPASH.
 - ⊕ CLOCK HANGER RECEPTACLE.
 - ⊕ SINGLE RECEPTACLE. 15A. 230V. A/C UNIT.
 - ⊕ DUPLEX. GROUND FAULT INTERRUPTER. MTD. 4'-0" A.F.
 - ⊕ EXISTING OUTLET TO BE RETAINED. NEW DEVICE AND PLATE.
- WIRING:**
- CONCEALED IN CEILING OR WALL. DIAGONAL LINES INDICATE NUMBER OF WIRES.
 - CONCEALED TO SWITCH.
 - EXPOSED.
 - FLEXIBLE CONNECTION.
 - HOMERUN TO PANELBOARD, PANEL PL, CIRCUITS 2 AND 4.
 - WIRING TURNING UP.
 - WIRING TURNING DOWN.
 - CIRCUIT BREAKER TYPE PANELBOARD.
- SUBSCRIPTS & ABBREVIATIONS:**
- E.C. ELECTRICAL CONTRACTOR.
 - H.V. HEATING AND VENTILATING CONTRACTOR.
 - P.C. PLUMBING CONTRACTOR.
 - G.C. GENERAL CONTRACTOR.
 - F. FURNISHED BY.
 - I. INSTALLED BY.
 - W. WIRED AND CONNECTED BY.
 - ER EXISTING TO BE RETAINED.
 - RL EXISTING TO BE RELOCATED.
 - A.F. MOUNTING HEIGHT ABOVE FINISH FLOOR TO CENTERLINE.
- MOTOR CONTROLS**
- ⊕ WIRING CONNECTION TO MOTOR OUTLET.
 - ⊕ WIRING CONNECTION TO CABINET UNIT HEATER.
 - ⊕ WIRING CONNECTION TO FAN.
 - ⊕ WIRING CONNECTION TO PUMP.
 - ⊕ MOTOR DISCONNECT SWITCH, TOGGLE TYPE.
 - ⊕ SAFETY DISCONNECT SWITCH. FUSED. (NEMA 3R.)
 - ⊕ MOTOR STARTER/CONTROLS. F. BY OTHERS. I. & W. BY E.C.
 - ⊕ MANUAL MOTOR STARTER WITH PILOT, FLUSH WALL MTD. 4'-0" A.F. WITH NAMEPLATE "EXHAUST FAN". 50. D. FS-1P/FS-3P.
- FIRE ALARM SYSTEM**
- ⊕ COMBINATION AUDIO/VISUAL SIGNAL DEVICE, WALL MTD. 8'-0" A.F., EXCEPT AS NOTED ON PLANS.
 - ⊕ MANUAL STATION, WALL MTD. 4'-0" A.F.
 - ⊕ AUTOMATIC HEAT DETECTOR, CEILING MTD. COMBINATION FIXED TEMPERATURE & RATE OF RISE TYPE, 135 DEG. F.
 - ⊕ AUTOMATIC HEAT DETECTOR, CEILING MTD. FIXED TEMPERATURE TYPE 190 DEG. F.
 - ⊕ SMOKE DETECTOR, CEILING MTD.
 - ⊕ DUCT SMOKE DETECTOR, F. & FIRE ALARM WIRING BY E.C., I. AND MOTOR CONTROL WIRING BY H.V.
 - ⊕ REMOTE TEST STATION, WALL MTD. 5'-0" A.F.
- SOUND SYSTEM**
- ⊕ SPEAKER. SURFACE WALL MTD.
 - ⊕ MICROPHONE OUTLET. 2 GANG.
- BOXES**
- ⊕ JUNCTION BOX ABOVE CEILING. 120V. POWER FOR HEATING CONTROLS.
 - ⊕ JUNCTION BOX WITH BLANK SWITCH PLATE.

1142

REVISION

NUMBER 8824
 PROJECT RENOVATION OF EVERETT ARMORY
 DATE 7/13/89
 SCALE NONE
 DRAWN BY RFR
 CHECKED BY JVH

ELECTRICAL
 LEGEND
 SCHEDULES
 DETAILS

E-3

